

For Research Use Only

PAPP A2 Polyclonal antibody, PBS Only

Catalog Number:33013-1-PBS



Basic Information

Catalog Number: 33013-1-PBS	GenBank Accession Number: NM_020318.2	Purification Method: Antigen affinity Purification
Size: 100ug , Concentration: 1 mg/ml by Nanodrop;	GeneID (NCBI): 60676	
Source: Rabbit	UNIPROT ID: Q9BXP8-1	
Isotype: IgG	Full Name: pappalysin 2	
Immunogen Catalog Number: EG2812	Calculated MW: 199 kDa	
	Observed MW: 250 kDa	

Applications

Tested Applications:
WB, Indirect ELISA

Species Specificity:
human

Background Information

PAPP A2 (Pregnancy-associated Plasma Protein A2) is a metalloproteinase member of the PAPP A protein family and is mainly secreted by the syncytiotrophoblast cells of the placenta. Unlike PAPP A in the same family that regulates the biological activity of insulin-like growth factors (IGFs), PAPP A2 can specifically cleave and inactivate the IGF-binding protein 5 (IGFBP-5), thereby releasing more free IGFs to promote fetal development. Moreover, its concentration significantly increases in the maternal blood during pregnancy, making it a potential new biomarker for assessing placental function and fetal growth restriction.

Storage

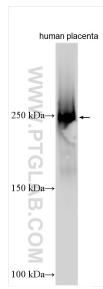
Storage:
Store at -80°C.

Storage Buffer:
PBS only, pH7.3

For technical support and original validation data for this product please contact:
T: 1 (888) 4PTGLAB (1-888-478-4522) (toll free in USA), or 1(312) 455-8498 (outside USA) E: proteintech@ptglab.com
W: ptglab.com

This product is exclusively available under Proteintech Group brand and is not available to purchase from any other manufacturer.

Selected Validation Data



Human placenta tissue were subjected to SDS PAGE followed by western blot with 33013-1-AP (PAPP A2 antibody) at dilution of 1:1000 incubated at room temperature for 1.5 hours. This data was developed using the same antibody clone with 33013-1-PBS in a different storage buffer formulation.