

For Research Use Only

MTCL2 Polyclonal antibody

Catalog Number:33016-1-AP



Basic Information

Catalog Number: 33016-1-AP	GenBank Accession Number: NM_080627	Purification Method: Antigen affinity Purification
Size: 150ul , Concentration: 450 ug/ml by Nanodrop;	GeneID (NCBI): 140710	Recommended Dilutions: WB: 1:500-1:2000
Source: Rabbit	UNIPROT ID: O94964	
Isotype: IgG	Full Name: chromosome 20 open reading frame 117	
Immunogen Catalog Number: AG35888	Calculated MW: 159kDa	
	Observed MW: 183 kDa, 50 kDa	

Applications

Tested Applications: WB, ELISA	Positive Controls: WB : HeLa cells, fetal human brain
Species Specificity: human	

Background Information

The coiled-coil protein MTCL2 preferentially acts on the perinuclear microtubules accumulated around the Golgi. MTCL2 associates with the Golgi membrane through the N-terminal coiled-coil region and directly binds microtubules through the conserved C-terminal domain without promoting microtubule stabilization. Knockdown of MTCL2 significantly impaired microtubule accumulation around the Golgi, as well as the compactness of the Golgi ribbon assembly structure. MTCL2 forms parallel oligomers through homo-interaction of the central coiled-coil motifs, and promotes asymmetric microtubule organization by crosslinking microtubules on the Golgi membrane. Results of in vitro wound healing assays further suggest that this function of MTCL2 enables integration of the centrosomal and Golgi-associated microtubules on the Golgi membrane, supporting directional migration. Additionally, the results demonstrated the involvement of CLASPs and giantin in mediating the Golgi association of MTCL2 (PMID: 35543016).

Storage

Storage:
Store at -20°C. Stable for one year after shipment.
Storage Buffer:
PBS with 0.02% sodium azide and 50% glycerol, pH7.3
Aliquoting is unnecessary for -20°C storage

*** 20ul sizes contain 0.1% BSA

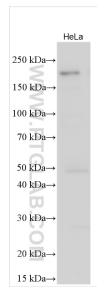
For technical support and original validation data for this product please contact:

T: 1 (888) 4PTGLAB (1-888-478-4522) (toll free in USA), or 1(312) 455-8498 (outside USA)

E: proteintech@ptglab.com
W: ptglab.com

This product is exclusively available under Proteintech Group brand and is not available to purchase from any other manufacturer.

Selected Validation Data



HeLa cells were subjected to SDS PAGE followed by western blot with 33016-1-AP (C20orf117 antibody) at dilution of 1:1000 incubated at room temperature for 1.5 hours.