

For Research Use Only

CTHF8 Polyclonal antibody

Catalog Number:33030-1-AP



Basic Information

Catalog Number: 33030-1-AP	GenBank Accession Number: BC018700	Purification Method: Antigen affinity Purification
Size: 150ul , Concentration: 510 ug/ml by Nanodrop;	GeneID (NCBI): 54921	Recommended Dilutions: WB: 1:5000-1:50000
Source: Rabbit	UNIPROT ID: POCG13	
Isotype: IgG	Full Name: CTF8, chromosome transmission fidelity factor 8 homolog (S. cerevisiae)	
Immunogen Catalog Number: AG39083	Observed MW: 15 kDa	

Applications

Tested Applications: WB, ELISA	Positive Controls: WB : MCF-7 cells, MDA-MB-231 cells, MKN-45 cells
Species Specificity: human	

Background Information

CTHF8 (C-terminal binding protein Transcriptional co-Factor 8) is a crucial protein that serves as a core component of the chromatin assembly factor-1 (CAF-1) complex.

Storage

Storage:
Store at -20°C. Stable for one year after shipment.
Storage Buffer:
PBS with 0.02% sodium azide and 50% glycerol, pH7.3
Aliquoting is unnecessary for -20°C storage

*** 20ul sizes contain 0.1% BSA

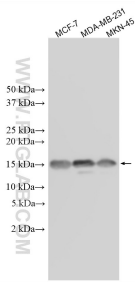
For technical support and original validation data for this product please contact:

T: 1 (888) 4PTGLAB (1-888-478-4522) (toll free in USA), or 1(312) 455-8498 (outside USA)

E: proteintech@ptglab.com
W: ptglab.com

This product is exclusively available under Proteintech Group brand and is not available to purchase from any other manufacturer.

Selected Validation Data



Various lysates were subjected to SDS PAGE followed by western blot with 33030-1-AP (CHTF8 antibody) at dilution of 1:10000 incubated at room temperature for 1.5 hours.