

For Research Use Only

# CTF8 Polyclonal antibody, PBS Only

Catalog Number: 33030-1-PBS



## Basic Information

**Catalog Number:**

33030-1-PBS

**Size:**

100ug, Concentration: 1 mg/ml by Nanodrop;

**Source:**

Rabbit

**Isotype:**

IgG

**Immunogen Catalog Number:**

AG39083

**GenBank Accession Number:**

BC018700

**GeneID (NCBI):**

54921

**UNIPROT ID:**

POCG13

**Full Name:**

CTF8, chromosome transmission fidelity factor 8 homolog (S. cerevisiae)

**Observed MW:**

15 kDa

**Purification Method:**

Antigen affinity Purification

## Applications

**Tested Applications:**

WB, Indirect ELISA

**Species Specificity:**

human

## Storage

**Storage:**

Store at -80°C.

**Storage Buffer:**

PBS only, pH7.3

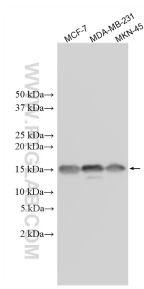
For technical support and original validation data for this product please contact:

T: 1 (888) 4PTGLAB (1-888-478-4522) (toll free in USA), or 1(312) 455-8498 (outside USA)

E: [proteintech@ptglab.com](mailto:proteintech@ptglab.com)  
W: [ptglab.com](http://ptglab.com)

This product is exclusively available under Proteintech Group brand and is not available to purchase from any other manufacturer.

## Selected Validation Data



Various lysates were subjected to SDS PAGE followed by western blot with 33030-1-AP (CHTF8 antibody) at dilution of 1:10000 incubated at room temperature for 1.5 hours. This data was developed using the same antibody clone with 33030-1-PBS in a different storage buffer formulation.