

For Research Use Only

PTCD1 Polyclonal antibody

Catalog Number:33057-1-AP



Basic Information

Catalog Number: 33057-1-AP	GenBank Accession Number: BC003688	Purification Method: Antigen affinity Purification
Size: 150ul , Concentration: 300 ug/ml by Nanodrop;	GeneID (NCBI): 26024	Recommended Dilutions: WB: 1:500-1:3000
Source: Rabbit	UNIPROT ID: O75127	
Isotype: IgG	Full Name: pentatricopeptide repeat domain 1	
Immunogen Catalog Number: AG37639	Calculated MW: 79 kDa	
	Observed MW: 72 kDa	

Applications

Tested Applications: WB, ELISA	Positive Controls: WB : Caco-2 cells, MCF-7 cells, MDA-MB-231 cells, mouse testis tissue
Species Specificity: human, mouse	

Background Information

PTCD1 protein (Pentatricopeptide Repeat Domain 1) is a nuclear gene-encoded protein located in the mitochondrial matrix. Its core function lies in regulating mitochondrial gene expression and the assembly of the respiratory chain. It specifically recognizes and binds to mitochondrial RNA (such as mRNA or pre-RNA) through its characteristic pentapeptide repeat sequence (PPR) motif, participating in RNA processing, stability maintenance, or translation processes, thereby being crucial for the assembly and function of mitochondrial oxidative phosphorylation complexes (especially complex I). Its deficiency is associated with mitochondrial dysfunction, neurodegenerative diseases, and cardiomyopathy and other pathological processes.

Storage

Storage:
Store at -20°C. Stable for one year after shipment.
Storage Buffer:
PBS with 0.02% sodium azide and 50% glycerol, pH7.3
Aliquoting is unnecessary for -20°C storage

*** 20ul sizes contain 0.1% BSA

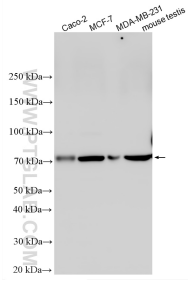
For technical support and original validation data for this product please contact:

T: 1 (888) 4PTGLAB (1-888-478-4522) (toll free in USA), or 1(312) 455-8498 (outside USA)

E: proteintech@ptglab.com
W: ptglab.com

This product is exclusively available under Proteintech Group brand and is not available to purchase from any other manufacturer.

Selected Validation Data



Various lysates were subjected to SDS PAGE followed by western blot with 33057-1-AP (PTCD1 antibody) at dilution of 1:1500 incubated at room temperature for 1.5 hours.