

For Research Use Only

PTCD1 Polyclonal antibody, PBS Only

Catalog Number:33057-1-PBS



Basic Information

Catalog Number:

33057-1-PBS

Size:

100ug, Concentration: 1 mg/ml by Nanodrop;

Source:

Rabbit

Isotype:

IgG

Immunogen Catalog Number:

AG37639

GenBank Accession Number:

BC003688

GeneID (NCBI):

26024

UNIPROT ID:

O75127

Full Name:

pentatricopeptide repeat domain 1

Calculated MW:

79 kDa

Observed MW:

72 kDa

Purification Method:

Antigen affinity Purification

Applications

Tested Applications:

WB, Indirect ELISA

Species Specificity:

human, mouse

Background Information

PTCD1 protein (Pentatricopeptide Repeat Domain 1) is a nuclear gene-encoded protein located in the mitochondrial matrix. Its core function lies in regulating mitochondrial gene expression and the assembly of the respiratory chain. It specifically recognizes and binds to mitochondrial RNA (such as mRNA or pre-RNA) through its characteristic pentapeptide repeat sequence (PPR) motif, participating in RNA processing, stability maintenance, or translation processes, thereby being crucial for the assembly and function of mitochondrial oxidative phosphorylation complexes (especially complex I). Its deficiency is associated with mitochondrial dysfunction, neurodegenerative diseases, and cardiomyopathy and other pathological processes.

Storage

Storage:

Store at -80°C.

Storage Buffer:

PBS only, pH7.3

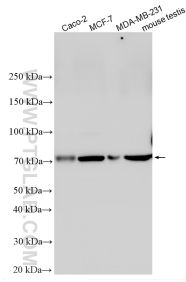
For technical support and original validation data for this product please contact:

T: 1 (888) 4PTGLAB (1-888-478-4522) (toll free in USA), or 1(312) 455-8498 (outside USA)

E: proteintech@ptglab.com
W: ptglab.com

This product is exclusively available under Proteintech Group brand and is not available to purchase from any other manufacturer.

Selected Validation Data



Various lysates were subjected to SDS PAGE followed by western blot with 33057-1-AP (PTCD1 antibody) at dilution of 1:1500 incubated at room temperature for 1.5 hours. This data was developed using the same antibody clone with 33057-1-PBS in a different storage buffer formulation.