

For Research Use Only

NRG2 Polyclonal antibody

Catalog Number: 33064-1-AP



Basic Information

Catalog Number: 33064-1-AP	GenBank Accession Number: NM_004883.3	Purification Method: Antigen affinity purification
Size: 150ul , Concentration: 440 ug/ml by Nanodrop;	GeneID (NCBI): 9542	Recommended Dilutions: WB: 1:500-1:2000
Source: Rabbit	UNIPROT ID: O14511-1	
Isotype: IgG	Full Name: neuregulin 2	
Immunogen Catalog Number: AG39953	Calculated MW: 92 kDa	
	Observed MW: 46 kDa	

Applications

Tested Applications: WB, ELISA	Positive Controls: WB : RT-4 cells, U-251 cells, U-87 MG cells
Species Specificity: human	

Background Information

NRG2 is a novel member of the neuregulin family of growth and differentiation factors. Through interaction with the ERBB family of receptors, this protein induces the growth and differentiation of epithelial, neuronal, glial, and other types of cells. The gene consists of 12 exons and the genomic structure is similar to that of neuregulin 1, another member of the neuregulin family of ligands. The products of these genes mediate distinct biological processes by acting at different sites in tissues and eliciting different biological responses in cells. This gene is located close to the region for demyelinating Charcot-Marie-Tooth disease locus, but is not responsible for this disease.

Storage

Storage:
Store at -20°C. Stable for one year after shipment.
Storage Buffer:
PBS with 0.02% sodium azide and 50% glycerol, pH7.3
Aliquoting is unnecessary for -20°C storage

***** 20ul sizes contain 0.1% BSA**

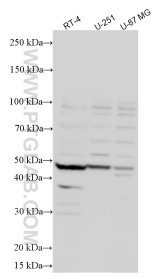
For technical support and original validation data for this product please contact:

T: 1 (888) 4PTGLAB (1-888-478-4522) (toll free in USA), or 1(312) 455-8498 (outside USA)

E: proteintech@ptglab.com
W: ptglab.com

This product is exclusively available under Proteintech Group brand and is not available to purchase from any other manufacturer.

Selected Validation Data



Various lysates were subjected to SDS PAGE followed by western blot with 33064-1-AP (NRG2 antibody) at dilution of 1:1000 incubated at room temperature for 1.5 hours.