

For Research Use Only

CD146/MCAM Polyclonal antibody

Catalog Number:33091-1-AP



Basic Information

Catalog Number: 33091-1-AP	GenBank Accession Number: NM_023061.2	Purification Method: Antigen affinity Purification
Size: 150ul , Concentration: 450 ug/ml by Nanodrop;	GeneID (NCBI): 84004	Recommended Dilutions: WB: 1:1000-1:8000 IHC: 1:500-1:2000
Source: Rabbit	UNIPROT ID: Q8R2Y2-1	
Isotype: IgG	Full Name: melanoma cell adhesion molecule	
Immunogen Catalog Number: EG2667	Calculated MW: 72 kDa	
	Observed MW: 120 kDa	

Applications

Tested Applications:
WB, IHC, ELISA

Species Specificity:
mouse, rat

Note-IHC: suggested antigen retrieval with TE buffer pH 9.0; (*) Alternatively, antigen retrieval may be performed with citrate buffer pH 6.0

Positive Controls:

WB : bEnd.3 cells, mouse lung tissue, rat lung tissue

IHC : mouse liver tissue, mouse lung tissue

Background Information

CD146, also known as melanoma cell adhesion molecule (MCAM) or MUC18, originally identified as a biomarker of melanoma progression, is a transmembrane glycoprotein of 113-130 kDa, belonging to the immunoglobulin (Ig) superfamily (PMID: 8378324; 25993332). Structurally, it consists of five Ig domains, a transmembrane domain, and a cytoplasmic region. In normal adult tissue, CD146 is primarily expressed by vascular endothelium and smooth muscle. CD146 is a key cell adhesion protein in vascular endothelial cell activity and angiogenesis, and has been used as a marker of circulating endothelium cells (CECs) (PMID: 19356677). In addition to the membrane-anchored form of CD146, a soluble form of CD146 (sCD146, 105 kDa) has also been found in human plasma and in the supernatant of cultured human endothelial cells (PMID: 9462829; 19229070; 16374253; 14597988).

Storage

Storage:

Store at -20°C. Stable for one year after shipment.

Storage Buffer:

PBS with 0.02% sodium azide and 50% glycerol, pH7.3

Aliquoting is unnecessary for -20°C storage

*** 20ul sizes contain 0.1% BSA

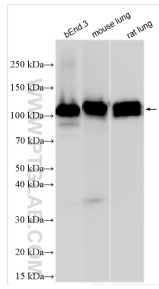
For technical support and original validation data for this product please contact:

T: 1 (888) 4PTGLAB (1-888-478-4522) (toll free in USA), or 1(312) 455-8498 (outside USA)

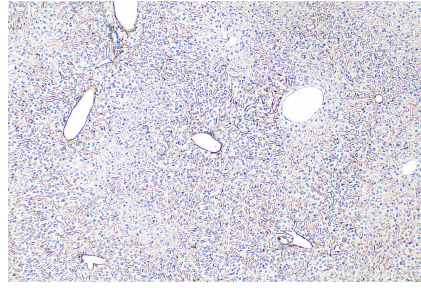
E: proteintech@ptglab.com
W: ptglab.com

This product is exclusively available under Proteintech Group brand and is not available to purchase from any other manufacturer.

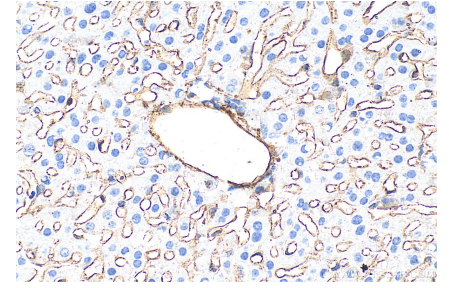
Selected Validation Data



Various lysates were subjected to SDS PAGE followed by western blot with 33091-1-AP (CD146/MCAM antibody) at dilution of 1:4000 incubated at room temperature for 1.5 hours.



Immunohistochemical analysis of paraffin-embedded mouse liver tissue slide using 33091-1-AP (CD146/MCAM antibody) at dilution of 1:1000 (under 10x lens). Heat mediated antigen retrieval with Tris-EDTA buffer (pH 9.0).



Immunohistochemical analysis of paraffin-embedded mouse liver tissue slide using 33091-1-AP (CD146/MCAM antibody) at dilution of 1:1000 (under 40x lens). Heat mediated antigen retrieval with Tris-EDTA buffer (pH 9.0).