

For Research Use Only

# Hemopexin Polyclonal antibody

Catalog Number:33095-1-AP



## Basic Information

<b>Catalog Number:</b> 33095-1-AP	<b>GenBank Accession Number:</b> NM_017371.2	<b>Purification Method:</b> Antigen affinity Purification
<b>Size:</b> 150ul , Concentration: 500 ug/ml by Nanodrop;	<b>GeneID (NCBI):</b> 15458	<b>Recommended Dilutions:</b> WB: 1:1000-1:6000
<b>Source:</b> Rabbit	<b>UNIPROT ID:</b> Q91X72	
<b>Isotype:</b> IgG	<b>Full Name:</b> hemopexin	
<b>Immunogen Catalog Number:</b> EG2829	<b>Calculated MW:</b> 51 kDa	
	<b>Observed MW:</b> 65-70 kDa	

## Applications

**Tested Applications:**  
WB, ELISA

**Species Specificity:**  
mouse, rat

**Positive Controls:**

WB : mouse brain tissue, mouse kidney tissue, mouse liver tissue, rat brain tissue

## Background Information

Hemopexin (HPX) is the plasma protein responsible for scavenging heme, thus preventing heme-mediated oxidative stress and heme-bound iron loss. In addition, hemopexin blocks heme activation of immune receptors and vascular inflammatory processes. It is mainly expressed in liver, the synthesis of which is induced after inflammation. Alterations of plasma hemopexin level have been linked to disorders like atherosclerosis and inflammatory diseases.

## Storage

**Storage:**  
Store at -20°C. Stable for one year after shipment.

**Storage Buffer:**  
PBS with 0.02% sodium azide and 50% glycerol, pH7.3

Aliquoting is unnecessary for -20°C storage

\*\*\* 20ul sizes contain 0.1% BSA

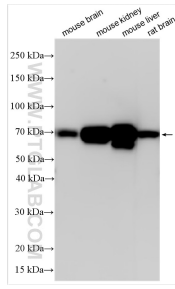
For technical support and original validation data for this product please contact:

T: 1 (888) 4PTGLAB (1-888-478-4522) (toll free in USA), or 1(312) 455-8498 (outside USA)

E: [proteintech@ptglab.com](mailto:proteintech@ptglab.com)  
W: [ptglab.com](http://ptglab.com)

This product is exclusively available under Proteintech Group brand and is not available to purchase from any other manufacturer.

## Selected Validation Data



Various lysates were subjected to SDS PAGE followed by western blot with 33095-1-AP (Hemopexin antibody) at dilution of 1:3000 incubated at room temperature for 1.5 hours.