

For Research Use Only

# CACHD1 Polyclonal antibody

Catalog Number: 33104-1-AP



## Basic Information

<b>Catalog Number:</b> 33104-1-AP	<b>GenBank Accession Number:</b> NM_198037.1	<b>Purification Method:</b> Antigen affinity Purification
<b>Size:</b> 150ul , Concentration: 400 ug/ml by Nanodrop;	<b>GeneID (NCBI):</b> 320508	<b>Recommended Dilutions:</b> WB: 1:500-1:2000
<b>Source:</b> Rabbit	<b>UNIPROT ID:</b> Q6PDJ1-1	
<b>Isotype:</b> IgG	<b>Full Name:</b> cache domain containing 1	
<b>Immunogen Catalog Number:</b> EG2855	<b>Calculated MW:</b> 143 kDa	
	<b>Observed MW:</b> 140-170 kDa	

## Applications

<b>Tested Applications:</b> WB, ELISA	<b>Positive Controls:</b> WB : mouse brain tissue, HeLa cells, mouse cerebellum tissue, rat brain tissue
<b>Species Specificity:</b> mouse, rat	

## Background Information

CACHD1 (Cache domain-containing protein 1), also called VWCD1 (VWFA and cache domain-containing protein 1), is a type I membrane protein involved that modulates the activities of voltage-gated Ca(2+) channels (VGCCs) (PMID: 30181139; 30404013). CACHD1 has certain glycosylation modifications, resulting in a protein molecular weight of 142-170 kDa (PMID: 30983497; 30404013). This antibody recognizes 142-170 kDa.

## Storage

**Storage:**  
Store at -20°C. Stable for one year after shipment.  
**Storage Buffer:**  
PBS with 0.02% sodium azide and 50% glycerol, pH7.3  
Aliquoting is unnecessary for -20°C storage

\*\*\* 20ul sizes contain 0.1% BSA

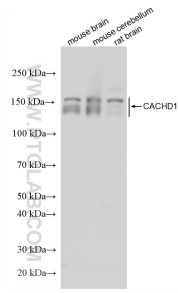
For technical support and original validation data for this product please contact:

T: 1 (888) 4PTGLAB (1-888-478-4522) (toll free in USA), or 1(312) 455-8498 (outside USA)

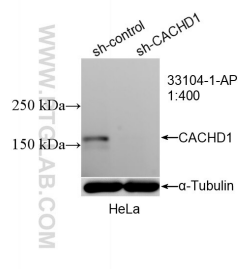
E: [proteintech@ptglab.com](mailto:proteintech@ptglab.com)  
W: [ptglab.com](http://ptglab.com)

This product is exclusively available under Proteintech Group brand and is not available to purchase from any other manufacturer.

## Selected Validation Data



Various lysates were subjected to SDS PAGE followed by western blot with 33104-1-AP (CACHD1 antibody) at dilution of 1:1000 incubated at room temperature for 1.5 hours.



WB result of CACHD1 antibody (33104-1-AP; 1:400; incubated at room temperature for 1.5 hours) with sh-Control and sh-CACHD1 transfected HeLa cells.