

For Research Use Only

# Mouse CACHD1 Polyclonal antibody, PBS Only

Catalog Number: 33104-1-PBS



## Basic Information

**Catalog Number:**

33104-1-PBS

**Size:**

100ug, Concentration: 1 mg/ml by  
Nanodrop;

**Source:**

Rabbit

**Isotype:**

IgG

**Immunogen Catalog Number:**

EG2855

**GenBank Accession Number:**

NM\_198037.1

**GeneID (NCBI):**

320508

**UNIPROT ID:**

Q6PDJ1-1

**Full Name:**

cache domain containing 1

**Calculated MW:**

143 kDa

**Observed MW:**

140-170 kDa

**Purification Method:**

Antigen affinity Purification

## Applications

**Tested Applications:**

WB, Indirect ELISA

**Species Specificity:**

mouse, rat

## Background Information

CACHD1 (Cache domain-containing protein 1), also called VWCD1 (VWFA and cache domain-containing protein 1), is a type I membrane protein involved that modulates the activities of voltage-gated Ca(2+) channels (VGCCs) (PMID: 30181139; 30404013). CACHD1 has certain glycosylation modifications, resulting in a protein molecular weight of 142-170 kDa (PMID: 30983497; 30404013). This antibody recognizes 142-170 kDa.

## Storage

**Storage:**

Store at -80°C.

**Storage Buffer:**

PBS only, pH7.3

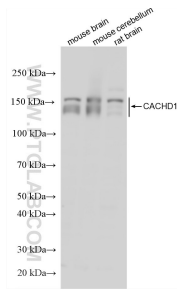
For technical support and original validation data for this product please contact:

T: 1 (888) 4PTGLAB (1-888-478-4522) (toll free  
in USA), or 1(312) 455-8498 (outside USA)

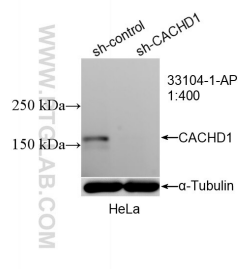
E: [proteintech@ptglab.com](mailto:proteintech@ptglab.com)  
W: [ptglab.com](http://ptglab.com)

**This product is exclusively available under Proteintech Group brand and is not available to purchase from any other manufacturer.**

## Selected Validation Data



Various lysates were subjected to SDS PAGE followed by western blot with 33104-1-AP (CACHD1 antibody) at dilution of 1:1000 incubated at room temperature for 1.5 hours. This data was developed using the same antibody clone with 33104-1-PBS in a different storage buffer formulation.



WB result of CACHD1 antibody (33104-1-AP; 1:400; incubated at room temperature for 1.5 hours) with sh-Control and sh-CACHD1 transfected HeLa cells. This data was developed using the same antibody clone with 33104-1-PBS in a different storage buffer formulation.