

For Research Use Only

LRI^G3 Polyclonal antibody

Catalog Number:33107-1-AP



Basic Information

Catalog Number: 33107-1-AP	GenBank Accession Number: NM_153377.4	Purification Method: Antigen affinity Purification
Size: 150ul , Concentration: 400 ug/ml by Nanodrop;	GeneID (NCBI): 121227	Recommended Dilutions: WB: 1:1000-1:4000 IF/ICC: 1:50-1:500
Source: Rabbit	UNIPROT ID: Q6UXM1-1	
Isotype: IgG	Full Name: leucine-rich repeats and immunoglobulin-like domains 3	
Immunogen Catalog Number: EG2853	Calculated MW: 123 kDa	
	Observed MW: 117 kDa	

Applications

Tested Applications: WB, IF/ICC, ELISA	Positive Controls: WB : HEK-293 cells, U-251 cells, U-87 MG cells
Species Specificity: human	IF/ICC : U2OS cells,

Background Information

LRI^G3 is a member of the LRI^G family of transmembrane proteins, characterized by leucine-rich repeats and immunoglobulin-like domains. It plays a crucial role in regulating various signaling pathways, including those involved in cell proliferation, differentiation, and immune responses.

Storage

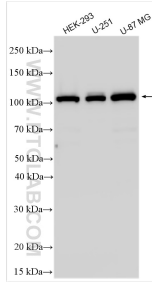
Storage:
Store at -20°C. Stable for one year after shipment.
Storage Buffer:
PBS with 0.02% sodium azide and 50% glycerol, pH7.3
Aliquoting is unnecessary for -20°C storage

***** 20ul sizes contain 0.1%BSA**

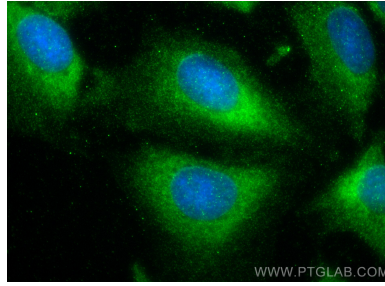
For technical support and original validation data for this product please contact:
T: 1 (888) 4PTGLAB (1-888-478-4522) (toll free in USA), or 1(312) 455-8498 (outside USA) E: proteintech@ptglab.com
W: ptglab.com

This product is exclusively available under Proteintech Group brand and is not available to purchase from any other manufacturer.

Selected Validation Data



Various lysates were subjected to SDS PAGE followed by western blot with 33107-1-AP (LRG3 antibody) at dilution of 1:2000 incubated at room temperature for 1.5 hours.



Immunofluorescent analysis of (-20°C Ethanol) fixed U2OS cells using LRG3 antibody (33107-1-AP) at dilution of 1:200 and CoraLite® 488-Conjugated Goat Anti-Rabbit IgG(H+L) (SA00013-2).