

For Research Use Only

LRI G3 Polyclonal antibody, PBS Only

Catalog Number: 33107-1-PBS



Basic Information

Catalog Number:

33107-1-PBS

Size:

100ug , Concentration: 1 mg/ml by Nanodrop;

Source:

Rabbit

Isotype:

IgG

Immunogen Catalog Number:

EG2853

GenBank Accession Number:

NM_153377.4

GeneID (NCBI):

121227

UNIPROT ID:

Q6UXM1-1

Full Name:

leucine-rich repeats and immunoglobulin-like domains 3

Calculated MW:

123 kDa

Observed MW:

117 kDa

Purification Method:

Antigen affinity Purification

Applications

Tested Applications:

WB, IF/ICC, Indirect ELISA

Species Specificity:

human

Background Information

LRI G3 is a member of the LRI G family of transmembrane proteins, characterized by leucine-rich repeats and immunoglobulin-like domains. It plays a crucial role in regulating various signaling pathways, including those involved in cell proliferation, differentiation, and immune responses.

Storage

Storage:

Store at -80°C.

Storage Buffer:

PBS only, pH7.3

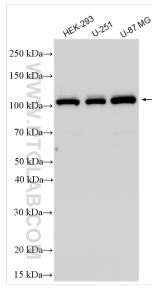
For technical support and original validation data for this product please contact:

T: 1 (888) 4PTGLAB (1-888-478-4522) (toll free in USA), or 1(312) 455-8498 (outside USA)

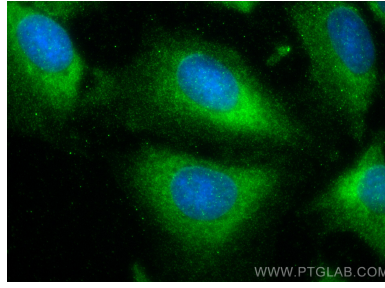
E: proteintech@ptglab.com
W: ptglab.com

This product is exclusively available under Proteintech Group brand and is not available to purchase from any other manufacturer.

Selected Validation Data



Various lysates were subjected to SDS PAGE followed by western blot with 33107-1-AP (LRIG3 antibody) at dilution of 1:2000 incubated at room temperature for 1.5 hours. This data was developed using the same antibody clone with 33107-1-PBS in a different storage buffer formulation.



Immunofluorescent analysis of (-20°C Ethanol) fixed U2OS cells using LRIG3 antibody (33107-1-AP) at dilution of 1:200 and CoraLite® 488-Conjugated Goat Anti-Rabbit IgG(H+L) (SA00013-2). This data was developed using the same antibody clone with 33107-1-PBS in a different storage buffer formulation.