

For Research Use Only

SLC26A9 Polyclonal antibody

Catalog Number: 33108-1-AP



Basic Information

Catalog Number:

33108-1-AP

Size:

150ul , Concentration: 550 ug/ml by Nanodrop;

Source:

Rabbit

Isotype:

IgG

Immunogen Catalog Number:

AG37313

GenBank Accession Number:

BC151208

GeneID (NCBI):

115019

UNIPROT ID:

Q7LBE3

Full Name:

solute carrier family 26, member 9

Calculated MW:

791 aa, 87 kDa

Observed MW:

100-115 kDa

Purification Method:

Antigen affinity Purification

Recommended Dilutions:

WB: 1:500-1:3000

IP: 0.5-4.0 ug for 1.0-3.0 mg of total protein lysate

Applications

Tested Applications:

WB, IP, ELISA

Species Specificity:

human, mouse

Positive Controls:

WB : mouse stomach tissue,

IP : BxPC-3 cells,

Background Information

Solute carrier family 26 member 9 (SLC26A9) is one out of 11 proteins that belong to the SLC26A family of anion transporters. Apart from expression in the gastrointestinal tract, SLC26A9 is also found in the respiratory system, in male tissues and in the skin. SLC26A9 has gained attention because of its modifier role in the gastrointestinal manifestation of cystic fibrosis (CF). SLC26A9 appears to have an impact on the extent of intestinal obstruction caused by meconium ileus. SLC26A9 supports duodenal bicarbonate secretion, but was assumed to provide a basal Cl⁻ secretory pathway in airways. (PMID: 36866602). SLC26A9 was shown to be located at the luminal side of lung bronchiolar and alveolar epithelium (PMID: 11834742).

Storage

Storage:

Store at -20°C. Stable for one year after shipment.

Storage Buffer:

PBS with 0.02% sodium azide and 50% glycerol, pH7.3

Aliquoting is unnecessary for -20°C storage

*** 20ul sizes contain 0.1% BSA

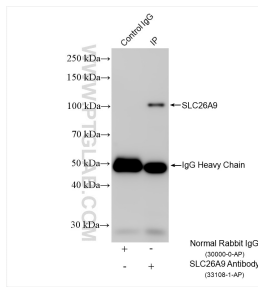
For technical support and original validation data for this product please contact:

T: 1 (888) 4PTGLAB (1-888-478-4522) (toll free in USA), or 1(312) 455-8498 (outside USA)

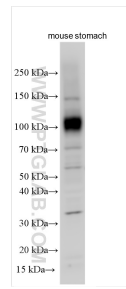
E: proteintech@ptglab.com
W: ptglab.com

This product is exclusively available under Proteintech Group brand and is not available to purchase from any other manufacturer.

Selected Validation Data



IP result of anti-SLC26A9 (IP:33108-1-AP, 4ug; Detection:33108-1-AP 1:500) with BxPC-3 cells lysate 1320 ug.



Various lysates were subjected to SDS PAGE followed by western blot with 33108-1-AP (SLC26A9 antibody) at dilution of 1:1500 incubated at room temperature for 1.5 hours.