

For Research Use Only

CPTP Polyclonal antibody, PBS Only

Catalog Number: 33114-1-PBS



Basic Information

Catalog Number: 33114-1-PBS	GenBank Accession Number: NM_001029885	Purification Method: Antigen affinity Purification
Size: 100ug , Concentration: 1 mg/ml by Nanodrop;	GeneID (NCBI): 80772	
Source: Rabbit	UNIPROT ID: Q5TA50	
Isotype: IgG	Full Name: glycolipid transfer protein domain containing 1	
Immunogen Catalog Number: AG35748	Calculated MW: 24 kDa 214aa	
	Observed MW: 24 kDa	

Applications

Tested Applications:
WB, Indirect ELISA

Species Specificity:
human

Background Information

Ceramide-1-phosphate transfer protein (CPTP) is a member of the glycolipid transfer protein (GLTP) family. It is the only identified protein in mammals that can selectively transport ceramide-1-phosphate (C1P) through a non-vesicular mechanism (PMID: 35982909). CPTP plays a crucial role in various biological processes, including cell proliferation, migration, and invasion. It is involved in the regulation of lipid metabolism, particularly in the context of ceramide-1-phosphate, which is a bioactive sphingolipid with roles in cell signaling, inflammation, and autophagy (PMID: 29164996).

Storage

Storage:
Store at -80°C.

Storage Buffer:
PBS only, pH7.3

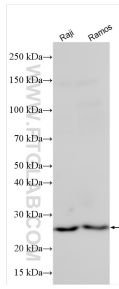
For technical support and original validation data for this product please contact:

T: 1 (888) 4PTGLAB (1-888-478-4522) (toll free in USA), or 1(312) 455-8498 (outside USA)

E: proteintech@ptglab.com
W: ptglab.com

This product is exclusively available under Proteintech Group brand and is not available to purchase from any other manufacturer.

Selected Validation Data



Various lysates were subjected to SDS PAGE followed by western blot with 33114-1-AP (CPTP antibody) at dilution of 1:800 incubated at room temperature for 1.5 hours. This data was developed using the same antibody clone with 33114-1-PBS in a different storage buffer formulation.