

For Research Use Only

XAGE2 Polyclonal antibody

Catalog Number: 33118-1-AP



Basic Information

Catalog Number: 33118-1-AP	GenBank Accession Number: NM_130777	Purification Method: Antigen affinity Purification
Size: 150ul , Concentration: 500 ug/ml by Nanodrop;	GeneID (NCBI): 9502	Recommended Dilutions: WB: 1:500-1:2000 IF/ICC: 1:200-1:800
Source: Rabbit	UNIPROT ID: Q96GT9	
Isotype: IgG	Full Name: X antigen family, member 2	
Immunogen Catalog Number: AG35814	Calculated MW: 12kDa	
	Observed MW: 20 kDa	

Applications

Tested Applications: WB, IF/ICC, ELISA	Positive Controls:
Species Specificity: human	WB : Caco-2 cells, IF/ICC : HeLa cells,

Background Information

XAGE2 (member 2 of the X antigen family), also known as CT12.2, GAGED3, XAGE-2, and XAGE2B, is a cancer-testis (CT) antigen that belongs to the GAGE family. This protein is strongly expressed in normal testes and is abnormally expressed in various tumors, including Ewing's sarcoma, rhabdomyosarcoma, breast cancer, and germ cell tumors. The XAGE2 protein shares sequence similarity with other GAGE/PAGE proteins, and its expression pattern and sequence similarity make it a member of the CT antigen family.

Storage

Storage:
Store at -20°C. Stable for one year after shipment.
Storage Buffer:
PBS with 0.02% sodium azide and 50% glycerol, pH7.3
Aliquoting is unnecessary for -20°C storage

*** 20ul sizes contain 0.1% BSA

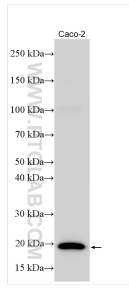
For technical support and original validation data for this product please contact:

T: 1 (888) 4PTGLAB (1-888-478-4522) (toll free in USA), or 1(312) 455-8498 (outside USA)

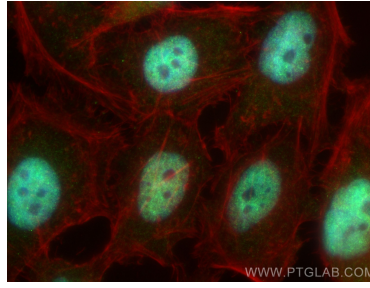
E: proteintech@ptglab.com
W: ptglab.com

This product is exclusively available under Proteintech Group brand and is not available to purchase from any other manufacturer.

Selected Validation Data



Various lysates were subjected to SDS PAGE followed by western blot with 33118-1-AP (XAGE2 antibody) at dilution of 1:1000 incubated at room temperature for 1.5 hours.



Immunofluorescent analysis of (4% PFA) fixed HeLa cells using XAGE2 antibody (33118-1-AP) at dilution of 1:400 and CoraLite®488-Conjugated Goat Anti-Rabbit IgG(H+L) (SA00013-2), CL594-phalloidin (red).