

For Research Use Only

CFAP161 Polyclonal antibody

Catalog Number: 33141-1-AP



Basic Information

Catalog Number: 33141-1-AP	GenBank Accession Number: NM_173528	Purification Method: Antigen affinity Purification
Size: 150ul , Concentration: 400 ug/ml by Nanodrop;	GeneID (NCBI): 161502	Recommended Dilutions: WB: 1:1000-1:4000
Source: Rabbit	UNIPROT ID: Q6P656	
Isotype: IgG	Full Name: chromosome 15 open reading frame 26	
Immunogen Catalog Number: AG37789	Calculated MW: 301aa, 34 kDa	
	Observed MW: 34 kDa	

Applications

Tested Applications: WB, ELISA	Positive Controls: WB : human testis tissue, mouse testis tissue, rat testis tissue
Species Specificity: human, mouse, rat	

Background Information

Cilia- and flagella-associated protein 161 (CFAP161) is a protein involved in the formation and function of motile cilia. It is a target gene of the transcription factor FOXJ1, which controls the expression of numerous ciliary components. CFAP161 is highly conserved across species and is essential for the proper function of motile cilia, which are critical for various physiological processes, including mucociliary clearance and sperm motility (PMID: 34172766; 39215164).

Storage

Storage:
Store at -20°C. Stable for one year after shipment.
Storage Buffer:
PBS with 0.02% sodium azide and 50% glycerol, pH7.3
Aliquoting is unnecessary for -20°C storage

*** 20ul sizes contain 0.1% BSA

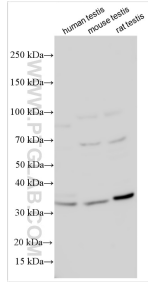
For technical support and original validation data for this product please contact:

T: 1 (888) 4PTGLAB (1-888-478-4522) (toll free in USA), or 1(312) 455-8498 (outside USA)

E: proteintech@ptglab.com
W: ptglab.com

This product is exclusively available under Proteintech Group brand and is not available to purchase from any other manufacturer.

Selected Validation Data



Various lysates were subjected to SDS PAGE followed by western blot with 33141-1-AP (CFAP161 antibody) at dilution of 1:2000 incubated at room temperature for 1.5 hours.