

For Research Use Only

EPS8L1 Polyclonal antibody

Catalog Number:33149-1-AP



Basic Information

Catalog Number:

33149-1-AP

Size:

150ul , Concentration: 300 ug/ml by Nanodrop;

Source:

Rabbit

Isotype:

IgG

Immunogen Catalog Number:

AG38144

GenBank Accession Number:

BC015763

GeneID (NCBI):

54869

UNIPROT ID:

Q8TE68

Full Name:

EPS8-Like 1

Calculated MW:

80 kDa

Observed MW:

80-85 kDa

Purification Method:

Antigen affinity Purification

Recommended Dilutions:

WB: 1:2000-1:12000

Applications

Tested Applications:

WB, ELISA

Species Specificity:

human

Positive Controls:

WB : HCT 116 cells, HT-29 cells, MCF-7 cells

Storage

Storage:

Store at -20°C. Stable for one year after shipment.

Storage Buffer:

PBS with 0.02% sodium azide and 50% glycerol, pH7.3

Aliquoting is unnecessary for -20°C storage

*** 20ul sizes contain 0.1% BSA

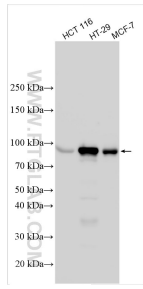
For technical support and original validation data for this product please contact:

T: 1 (888) 4PTGLAB (1-888-478-4522) (toll free in USA), or 1(312) 455-8498 (outside USA)

E: proteintech@ptglab.com
W: ptglab.com

This product is exclusively available under Proteintech Group brand and is not available to purchase from any other manufacturer.

Selected Validation Data



Various lysates were subjected to SDS PAGE followed by western blot with 33149-1-AP (EPS8L1 antibody) at dilution of 1:6000 incubated at room temperature for 1.5 hours.