

For Research Use Only

INSM2 Polyclonal antibody

Catalog Number: 33151-1-AP



Basic Information

Catalog Number: 33151-1-AP	GenBank Accession Number: NML_032594.3	Purification Method: Antigen affinity Purification
Size: 150ul , Concentration: 700 ug/ml by Nanodrop;	GeneID (NCBI): 84684	Recommended Dilutions: WB: 1:1000-1:8000
Source: Rabbit	UNIPROT ID: Q96T92	
Isotype: IgG	Full Name: insulinoma-associated 2	
Immunogen Catalog Number: AG38945	Calculated MW: 59kDa 566aa	
	Observed MW: 68 kDa	

Applications

Tested Applications: WB, ELISA	Positive Controls: WB : A549 cells, Calu-1 cells, SH-SY5Y cells, SK-N-SH cells
Species Specificity: human	

Background Information

INSM2 (Insulinoma-associated protein 2) is a zinc-finger protein belonging to the transcription factor family and has transcriptional repressive functions. It may exert growth-inhibitory or tumor-suppressive effects in hepatocytes and certain neurons. The primary function of INSM2 involves the regulation of gene expression, particularly the repression of insulin gene expression in non-pancreatic cells. Additionally, INSM2 is upregulated in neuroblastoma and is associated with poor prognosis. It promotes tumor development by affecting lipid metabolism through the regulation of the mTOR signaling pathway.

Storage

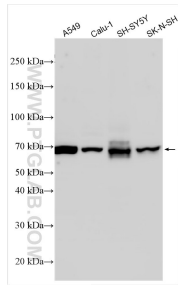
Storage:
Store at -20°C. Stable for one year after shipment.
Storage Buffer:
PBS with 0.02% sodium azide and 50% glycerol, pH7.3
Aliquoting is unnecessary for -20°C storage

*** 20ul sizes contain 0.1% BSA

For technical support and original validation data for this product please contact:
T: 1 (888) 4PTGLAB (1-888-478-4522) (toll free in USA), or 1(312) 455-8498 (outside USA)
E: proteintech@ptglab.com
W: ptglab.com

This product is exclusively available under Proteintech Group brand and is not available to purchase from any other manufacturer.

Selected Validation Data



Various lysates were subjected to SDS PAGE followed by western blot with 33151-1-AP (INSM2 antibody) at dilution of 1:4000 incubated at room temperature for 1.5 hours.