

For Research Use Only

FCRL1 Polyclonal antibody

Catalog Number: 33184-1-AP



Basic Information

Catalog Number:

33184-1-AP

Size:

150ul , Concentration: 450 µg/ml by Nanodrop;

Source:

Rabbit

Isotype:

IgG

Immunogen Catalog Number:

EG3713

GenBank Accession Number:

BC033690

GeneID (NCBI):

115350

UNIPROT ID:

Q96LA6

Full Name:

Fc receptor-like 1

Calculated MW:

429 aa, 47 kDa

Observed MW:

47 kDa

Purification Method:

Antigen affinity Purification

Recommended Dilutions:

WB: 1:500-1:1000

Applications

Tested Applications:

WB, ELISA

Species Specificity:

human, mouse, rat

Positive Controls:

WB : mouse heart tissue, rat heart tissue

Background Information

Fc receptor-like protein 1 (FCRL1) is a type I transmembrane glycoprotein that plays a crucial role in regulating B-cell receptor (BCR)-mediated signaling responses (PMID:15479727). It contains intracellular tyrosine-based motifs that can modulate BCR signaling, leading to changes in calcium flux, proliferation, and antibody production (PMID: 37822931). FCRL1 is involved in regulating B-cell development and activation, with its signaling pathways influencing ERK activation through interactions with proteins such as GRB2. This regulation is essential for maintaining B-cell homeostasis and preventing the development of autoreactive B cells (PMID: 34697226).

Storage

Storage:

Store at -20°C. Stable for one year after shipment.

Storage Buffer:

PBS with 0.02% sodium azide and 50% glycerol, pH7.3

Aliquoting is unnecessary for -20°C storage

*** 20ul sizes contain 0.1% BSA

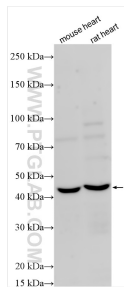
For technical support and original validation data for this product please contact:

T: 1 (888) 4PTGLAB (1-888-478-4522) (toll free in USA), or 1(312) 455-8498 (outside USA)

E: proteintech@ptglab.com
W: ptglab.com

This product is exclusively available under Proteintech Group brand and is not available to purchase from any other manufacturer.

Selected Validation Data



Various lysates were subjected to SDS PAGE followed by western blot with 33184-1-AP (FCRL1 antibody) at dilution of 1:500 incubated at room temperature for 1.5 hours.