

For Research Use Only

# BORC6 Polyclonal antibody

Catalog Number: 33196-1-AP



## Basic Information

<b>Catalog Number:</b> 33196-1-AP	<b>GenBank Accession Number:</b> BC018880	<b>Purification Method:</b> Antigen affinity Purification
<b>Size:</b> 150ul , Concentration: 350 ug/ml by Nanodrop;	<b>GeneID (NCBI):</b> 54785	<b>Recommended Dilutions:</b> WB: 1:500-1:1000
<b>Source:</b> Rabbit	<b>UNIPROT ID:</b> Q96GS4	
<b>Isotype:</b> IgG	<b>Full Name:</b> chromosome 17 open reading frame 59	
<b>Immunogen Catalog Number:</b> AG37224	<b>Calculated MW:</b> 357 aa, 37 kDa	
	<b>Observed MW:</b> 40 kDa	

## Applications

<b>Tested Applications:</b> WB, ELISA	<b>Positive Controls:</b> WB : HEK-293 cells, HeLa cells, RT-4 cells, U-251 cells, U-87 MG cells
<b>Species Specificity:</b> human	

## Background Information

BORC6 is a part of the BORC complex, which may play a role in lysosomes movement and localization at the cell periphery. Associated with the cytosolic face of lysosomes, the BORC complex may recruit ARL8B and couple lysosomes to microtubule plus-end-directed kinesin motor (PMID: 25898167).

## Storage

**Storage:**  
Store at -20°C. Stable for one year after shipment.  
**Storage Buffer:**  
PBS with 0.02% sodium azide and 50% glycerol, pH7.3  
Aliquoting is unnecessary for -20°C storage

\*\*\* 20ul sizes contain 0.1% BSA

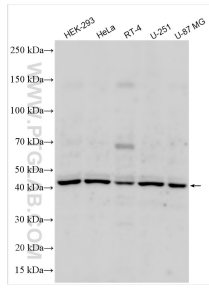
For technical support and original validation data for this product please contact:

T: 1 (888) 4PTGLAB (1-888-478-4522) (toll free in USA), or 1(312) 455-8498 (outside USA)

E: [proteintech@ptglab.com](mailto:proteintech@ptglab.com)  
W: [ptglab.com](http://ptglab.com)

This product is exclusively available under Proteintech Group brand and is not available to purchase from any other manufacturer.

## Selected Validation Data



Various lysates were subjected to SDS PAGE followed by western blot with 33196-1-AP (Lyspersin antibody) at dilution of 1:600 incubated at room temperature for 1.5 hours.