

For Research Use Only

# TMEM209 Polyclonal antibody, PBS Only

Catalog Number: 33203-1-PBS



## Basic Information

<b>Catalog Number:</b> 33203-1-PBS	<b>GenBank Accession Number:</b> BC045618	<b>Purification Method:</b> Antigen affinity Purification
<b>Size:</b> 100ug , Concentration: 1 mg/ml by Nanodrop;	<b>GeneID (NCBI):</b> 84928	
<b>Source:</b> Rabbit	<b>UNIPROT ID:</b> Q96SK2	
<b>Isotype:</b> IgG	<b>Full Name:</b> transmembrane protein 209	
<b>Immunogen Catalog Number:</b> AG34162	<b>Calculated MW:</b> 561 aa, 63 kDa	
	<b>Observed MW:</b> 63 kDa	

## Applications

**Tested Applications:**  
WB, Indirect ELISA

**Species Specificity:**  
human, mouse, rat

## Background Information

Transmembrane protein 209 (TMEM209) is a nuclear envelope protein that interacts with nucleoporin protein NUP205, and may be involved in nuclear transport of various nuclear proteins in addition to MYC (PMID: 22719065). Additionally, TMEM209 is implicated in the regulation of the Wnt/ $\beta$ -catenin signaling pathway, which is often activated in hepatocellular carcinoma (HCC) and contributes to tumor progression (PMID: 39414762).

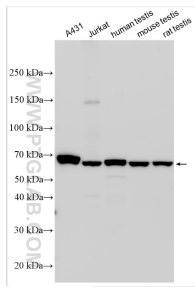
## Storage

**Storage:**  
Store at -80°C.  
**Storage Buffer:**  
PBS only, pH7.3

For technical support and original validation data for this product please contact:  
T: 1 (888) 4PTGLAB (1-888-478-4522) (toll free in USA), or 1(312) 455-8498 (outside USA)      E: [proteintech@ptglab.com](mailto:proteintech@ptglab.com)  
W: [ptglab.com](http://ptglab.com)

This product is exclusively available under Proteintech Group brand and is not available to purchase from any other manufacturer.

## Selected Validation Data



Various lysates were subjected to SDS PAGE followed by western blot with 33203-1-AP (TMEM209 antibody) at dilution of 1:4000 incubated at room temperature for 1.5 hours. This data was developed using the same antibody clone with 33203-1-PBS in a different storage buffer formulation.