

For Research Use Only

PRDM6 Polyclonal antibody, PBS Only

Catalog Number:33205-1-PBS



Basic Information

Catalog Number:

33205-1-PBS

Size:

100ug, Concentration: 1 mg/ml by Nanodrop;

Source:

Rabbit

Isotype:

IgG

Immunogen Catalog Number:

AG38054

GenBank Accession Number:

NM_001136239

GeneID (NCBI):

93166

UNIPROT ID:

Q9NQX0

Full Name:

PR domain containing 6

Calculated MW:

595aa, 64 kDa

Observed MW:

75 kDa

Purification Method:

Antigen affinity Purification

Applications

Tested Applications:

WB, Indirect ELISA

Species Specificity:

human

Background Information

PRDM6 is a poorly characterized member of the PRDF1 and RIZ1 homology domain-containing (PRDM) family of transcription factors that possess histone lysine methyltransferase activities through their catalytic SET domain. Based on findings in other species, PRDM6 is currently classified as a pseudo-methyltransferase that may interact with the methyltransferase G9a and corepressors to indirectly affect the methylation status of histone H3 lysine and histone H4 lysine. PRDM6 inhibition may have therapeutic value in PRDM6-expressing medulloblastomas (PMID: 38992221). PRDM6 has one glycosylation modification site.

Storage

Storage:

Store at -80°C.

Storage Buffer:

PBS only, pH7.3

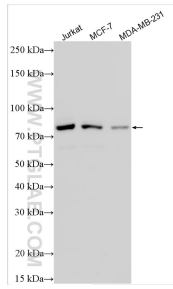
For technical support and original validation data for this product please contact:

T: 1 (888) 4PTGLAB (1-888-478-4522) (toll free in USA), or 1(312) 455-8498 (outside USA)

E: proteintech@ptglab.com
W: ptglab.com

This product is exclusively available under Proteintech Group brand and is not available to purchase from any other manufacturer.

Selected Validation Data



Various lysates were subjected to SDS PAGE followed by western blot with 33205-1-AP (PRDM6 antibody) at dilution of 1:3000 incubated at room temperature for 1.5 hours. This data was developed using the same antibody clone with 33205-1-PBS in a different storage buffer formulation.