

For Research Use Only

TMEM16A/DOG1 Polyclonal antibody

Catalog Number: 33212-1-AP



Basic Information

Catalog Number: 33212-1-AP	GenBank Accession Number: NM_018043.5	Purification Method: Antigen affinity Purification
Size: 150ul , Concentration: 250 ug/ml by Nanodrop;	GeneID (NCBI): 55107	Recommended Dilutions: IHC: 1:50-1:500
Source: Rabbit	UNIPROT ID: Q5XXA6	
Isotype: IgG	Full Name: anoctamin 1, calcium activated chloride channel	
Immunogen Catalog Number: AG37099	Calculated MW: 114kDa 986aa	

Applications

Tested Applications: IHC, ELISA	Positive Controls: IHC : human lung cancer tissue,
Species Specificity: human	
Note-IHC: suggested antigen retrieval with TE buffer pH 9.0; (*) Alternatively, antigen retrieval may be performed with citrate buffer pH 6.0	

Background Information

ANO1 also named as DOG1, ORAOV2, TAOS2 and TMEM16A, acts as a calcium-activated chloride channel. It is required for normal tracheal development. ANO1 (or DOG1) is used as an aid in the identification and diagnosis of gastrointestinal stromal tumors (GIST) within the context of an antibody panel, the patient's clinical history, and other diagnostic tests evaluated by a qualified pathologist.

Storage

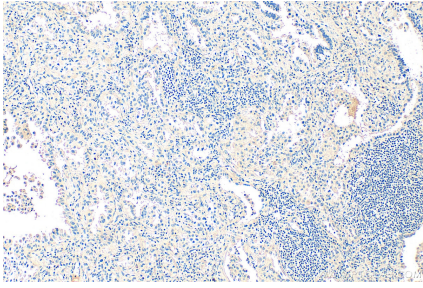
Storage:
Store at -20°C. Stable for one year after shipment.
Storage Buffer:
PBS with 0.02% sodium azide and 50% glycerol, pH7.3
Aliquoting is unnecessary for -20°C storage

*** 20ul sizes contain 0.1% BSA

For technical support and original validation data for this product please contact:
T: 1 (888) 4PTGLAB (1-888-478-4522) (toll free in USA), or 1(312) 455-8498 (outside USA)
E: proteintech@ptglab.com
W: ptglab.com

This product is exclusively available under Proteintech Group brand and is not available to purchase from any other manufacturer.

Selected Validation Data



Immunohistochemical analysis of paraffin-embedded human lung cancer tissue slide using 33212-1-AP (TMEM16A/DOG1 antibody) at dilution of 1:200 (under 40x lens). Heat mediated antigen retrieval with Tris-EDTA buffer (pH 9.0).