

For Research Use Only

PHLDB1 Polyclonal antibody, PBS Only

Catalog Number: 33225-1-PBS



Basic Information

Catalog Number:

33225-1-PBS

Size:

100ug, Concentration: 1 mg/ml by Nanodrop;

Source:

Rabbit

Isotype:

IgG

Immunogen Catalog Number:

AG37254

GenBank Accession Number:

BC098586

GeneID (NCBI):

23187

UNIPROT ID:

Q86UU1

Full Name:

pleckstrin homology-like domain, family B, member 1

Observed MW:

151 kDa

Purification Method:

Antigen affinity Purification

Applications

Tested Applications:

WB, IHC, IF/ICC, Indirect ELISA

Species Specificity:

human, mouse

Background Information

PHLDB1 (Pleckstrin Homology-like Domain Family B Member 1), also known as LL5α, is a scaffolding protein that specifically binds to phosphatidylinositol-3,4,5-trisphosphate (PIP3) through its C-terminal PH domain, anchoring microtubule plus ends to the cell cortex. Functionally, PHLDB1 acts as an insulin-responsive protein that translocates from the cytoplasm to the plasma membrane upon insulin stimulation, promoting GLUT4 translocation and glucose uptake by enhancing Akt phosphorylation. In addition, PHLDB1 plays a key role in cell migration. Studies have shown that its genetic polymorphisms are associated with glioma risk, and by enhancing PI3K/AKT signaling, it promotes tumor cell invasion and metastasis, making it a potential prognostic marker and therapeutic target.

Storage

Storage:

Store at -80°C.

Storage Buffer:

PBS only, pH7.3

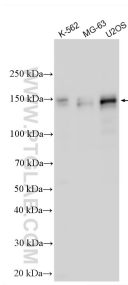
For technical support and original validation data for this product please contact:

T: 1 (888) 4PTGLAB (1-888-478-4522) (toll free in USA), or 1(312) 455-8498 (outside USA)

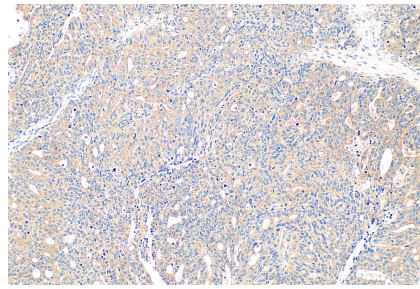
E: proteintech@ptglab.com
W: ptglab.com

This product is exclusively available under Proteintech Group brand and is not available to purchase from any other manufacturer.

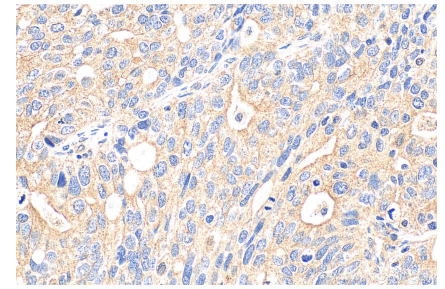
Selected Validation Data



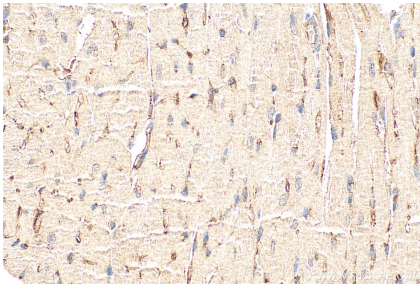
Various lysates were subjected to SDS PAGE followed by western blot with 33225-1-AP (PHLDB1 antibody) at dilution of 1:4000 incubated at room temperature for 1.5 hours. This data was developed using the same antibody clone with 33225-1-PBS in a different storage buffer formulation.



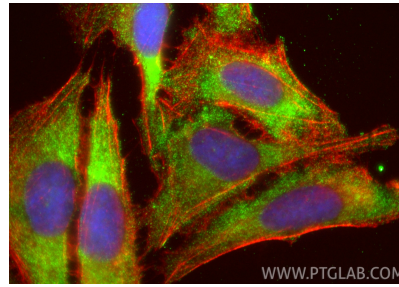
Immunohistochemical analysis of paraffin-embedded human ovary tumor tissue slide using 33225-1-AP (PHLDB1 antibody) at dilution of 1:200 (under 10x lens). Heat mediated antigen retrieval with Tris-EDTA buffer (pH 9.0). This data was developed using the same antibody clone with 33225-1-PBS in a different storage buffer formulation.



Immunohistochemical analysis of paraffin-embedded human ovary tumor tissue slide using 33225-1-AP (PHLDB1 antibody) at dilution of 1:200 (under 40x lens). Heat mediated antigen retrieval with Tris-EDTA buffer (pH 9.0). This data was developed using the same antibody clone with 33225-1-PBS in a different storage buffer formulation.



Immunohistochemical analysis of paraffin-embedded mouse heart tissue slide using 33225-1-AP (PHLDB1 antibody) at dilution of 1:200 (under 40x lens). Heat mediated antigen retrieval with Tris-EDTA buffer (pH 9.0). This data was developed using the same antibody clone with 33225-1-PBS in a different storage buffer formulation.



Immunofluorescent analysis of (-20°C Ethanol) fixed U2OS cells using PHLDB1 antibody (33225-1-AP) at dilution of 1:400 and CoraLite® 488-Conjugated Goat Anti-Rabbit IgG(H+L) (SA00013-2), CL594-Phalloidin (red). This data was developed using the same antibody clone with 33225-1-PBS in a different storage buffer formulation.