

For Research Use Only

SLC25A31/ANT4 Polyclonal antibody

Catalog Number: 33263-1-AP



Basic Information

Catalog Number:

33263-1-AP

Size:

150ul, Concentration: 350 ug/ml by Nanodrop;

Source:

Rabbit

Isotype:

IgG

Immunogen Catalog Number:

AG11008

GenBank Accession Number:

BC022032

GeneID (NCBI):

83447

UNIPROT ID:

Q9HOC2

Full Name:

solute carrier family 25 (mitochondrial carrier; adenine nucleotide translocator), member 31

Calculated MW:

315 aa, 35 kDa

Observed MW:

35 kDa

Purification Method:

Antigen affinity Purification

Recommended Dilutions:

WB: 1:1000-1:6000

IHC: 1:50-1:500

IF/ICC: 1:50-1:500

Applications

Tested Applications:

WB, IHC, IF/ICC, ELISA

Species Specificity:

human, mouse, rat

Note-IHC: suggested antigen retrieval with TE buffer pH 9.0; (*) Alternatively, antigen retrieval may be performed with citrate buffer pH 6.0

Positive Controls:

WB : human testis tissue, mouse testis tissue, rat testis tissue

IHC : mouse kidney tissue, mouse testis tissue

IF/ICC : U-251 cells,

Background Information

SLC25A31, also known as ANT4, is a member of the mitochondrial carrier family. The proteins of this family are mainly involved in the transport of substances inside and outside the mitochondria. SLC25A31 is an ADP/ATP antiporter protein, which catalyzes the exchange of ATP generated in mitochondria by ATP synthase against ADP produced in cytosol by most energy-consuming reactions (PMID: 15670820). SLC25A31 is mainly expressed in the testis and male germ cells (PMID: 25031318, 23506884).

Storage

Storage:

Store at -20°C. Stable for one year after shipment.

Storage Buffer:

PBS with 0.02% sodium azide and 50% glycerol, pH7.3

Aliquoting is unnecessary for -20°C storage

*** 20ul sizes contain 0.1% BSA

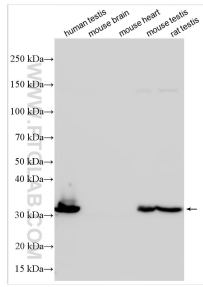
For technical support and original validation data for this product please contact:

T: 1 (888) 4PTGLAB (1-888-478-4522) (toll free in USA), or 1(312) 455-8498 (outside USA)

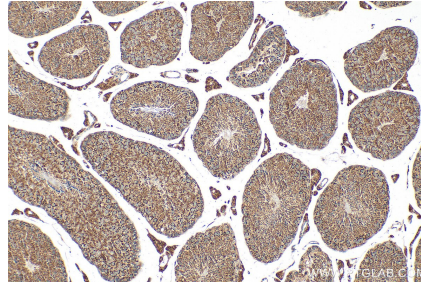
E: proteintech@ptglab.com
W: ptglab.com

This product is exclusively available under Proteintech Group brand and is not available to purchase from any other manufacturer.

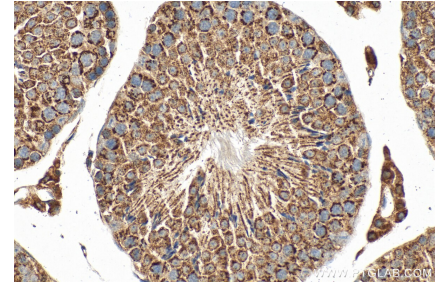
Selected Validation Data



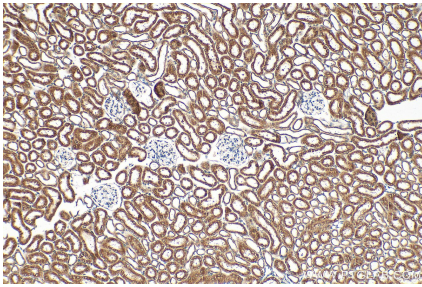
Various lysates were subjected to SDS PAGE followed by western blot with 33263-1-AP (ANT4 antibody) at dilution of 1:3000 incubated at room temperature for 1.5 hours. Negative control: mouse brain tissue, mouse heart tissue.



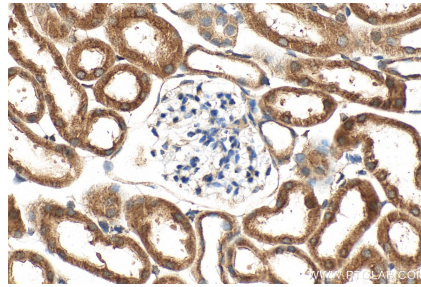
Immunohistochemical analysis of paraffin-embedded mouse testis tissue slide using 33263-1-AP (SLC25A31/ANT4 antibody) at dilution of 1:200 (under 10x lens). Heat mediated antigen retrieval with Tris-EDTA buffer (pH 9.0).



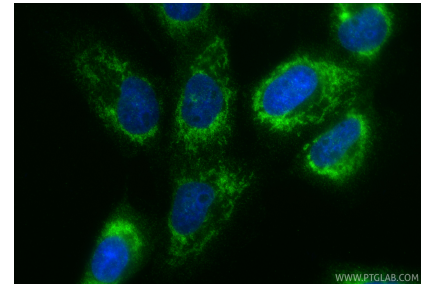
Immunohistochemical analysis of paraffin-embedded mouse testis tissue slide using 33263-1-AP (SLC25A31/ANT4 antibody) at dilution of 1:200 (under 40x lens). Heat mediated antigen retrieval with Tris-EDTA buffer (pH 9.0).



Immunohistochemical analysis of paraffin-embedded mouse kidney tissue slide using 33263-1-AP (SLC25A31/ANT4 antibody) at dilution of 1:200 (under 10x lens). Heat mediated antigen retrieval with Tris-EDTA buffer (pH 9.0).



Immunohistochemical analysis of paraffin-embedded mouse kidney tissue slide using 33263-1-AP (SLC25A31/ANT4 antibody) at dilution of 1:200 (under 40x lens). Heat mediated antigen retrieval with Tris-EDTA buffer (pH 9.0).



Immunofluorescent analysis of (4% PFA) fixed U-251 cells using SLC25A31/ANT4 antibody (33263-1-AP) at dilution of 1:200 and CoraLite®488-Conjugated Goat Anti-Rabbit IgG(H+L) (SA00013-2).