

For Research Use Only

SLC25A31/ANT4 Polyclonal antibody, PBS Only

Catalog Number:33263-1-PBS



Basic Information

Catalog Number:

33263-1-PBS

Size:

100ug , Concentration: 1 mg/ml by
Nanodrop;

Source:

Rabbit

Isotype:

IgG

Immunogen Catalog Number:

AG11008

GenBank Accession Number:

BC022032

GeneID (NCBI):

83447

UNIPROT ID:

Q9HOC2

Full Name:

solute carrier family 25
(mitochondrial carrier; adenine
nucleotide translocator), member 31

Calculated MW:

315 aa, 35 kDa

Observed MW:

35 kDa

Purification Method:

Antigen affinity Purification

Applications

Tested Applications:

WB, IHC, IF/ICC, Indirect ELISA

Species Specificity:

human, mouse, rat

Background Information

SLC25A31, also known as ANT4, is a member of the mitochondrial carrier family. The proteins of this family are mainly involved in the transport of substances inside and outside the mitochondria. SLC25A31 is an ADP/ATP antiporter protein, which catalyzes the exchange of ATP generated in mitochondria by ATP synthase against ADP produced in cytosol by most energy-consuming reactions (PMID: 15670820). SLC25A31 is mainly expressed in the testis and male germ cells (PMID: 25031318, 23506884).

Storage

Storage:

Store at -80°C.

Storage Buffer:

PBS only, pH7.3

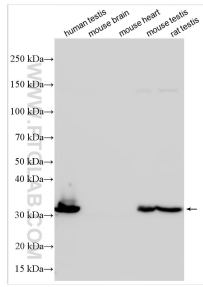
For technical support and original validation data for this product please contact:

T: 1 (888) 4PTGLAB (1-888-478-4522) (toll free
in USA), or 1(312) 455-8498 (outside USA)

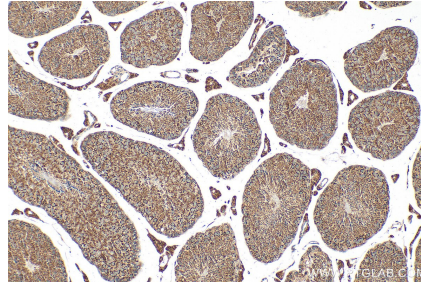
E: proteintech@ptglab.com
W: ptglab.com

This product is exclusively available under Proteintech Group brand and is not available to purchase from any other manufacturer.

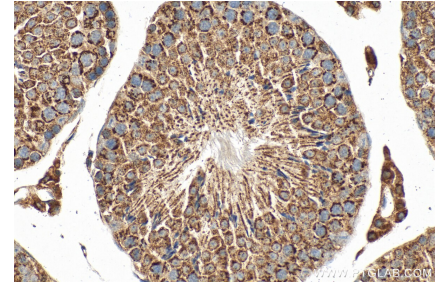
Selected Validation Data



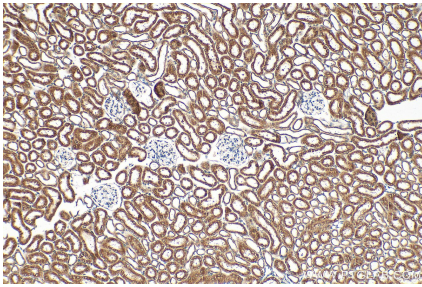
Various lysates were subjected to SDS PAGE followed by western blot with 33263-1-AP (ANT4 antibody) at dilution of 1:3000 incubated at room temperature for 1.5 hours. Negative control: mouse brain tissue, mouse heart tissue. This data was developed using the same antibody clone with 33263-1-PBS in a different storage buffer formulation.



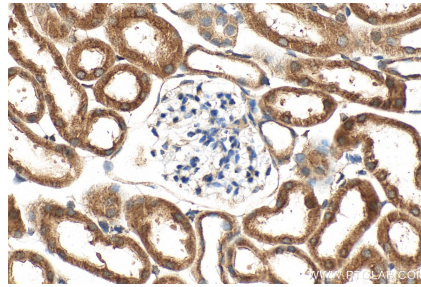
Immunohistochemical analysis of paraffin-embedded mouse testis tissue slide using 33263-1-AP (SLC25A31/ANT4 antibody) at dilution of 1:200 (under 10x lens). Heat mediated antigen retrieval with Tris-EDTA buffer (pH 9.0). This data was developed using the same antibody clone with 33263-1-PBS in a different storage buffer formulation.



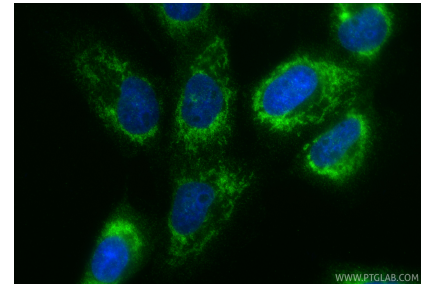
Immunohistochemical analysis of paraffin-embedded mouse testis tissue slide using 33263-1-AP (SLC25A31/ANT4 antibody) at dilution of 1:200 (under 40x lens). Heat mediated antigen retrieval with Tris-EDTA buffer (pH 9.0). This data was developed using the same antibody clone with 33263-1-PBS in a different storage buffer formulation.



Immunohistochemical analysis of paraffin-embedded mouse kidney tissue slide using 33263-1-AP (SLC25A31/ANT4 antibody) at dilution of 1:200 (under 10x lens). Heat mediated antigen retrieval with Tris-EDTA buffer (pH 9.0). This data was developed using the same antibody clone with 33263-1-PBS in a different storage buffer formulation.



Immunohistochemical analysis of paraffin-embedded mouse kidney tissue slide using 33263-1-AP (SLC25A31/ANT4 antibody) at dilution of 1:200 (under 40x lens). Heat mediated antigen retrieval with Tris-EDTA buffer (pH 9.0). This data was developed using the same antibody clone with 33263-1-PBS in a different storage buffer formulation.



Immunofluorescent analysis of (4% PFA) fixed U-251 cells using SLC25A31/ANT4 antibody (33263-1-AP) at dilution of 1:200 and CoraLite®488-Conjugated Goat Anti-Rabbit IgG(H+L) (SA00013-2). This data was developed using the same antibody clone with 33263-1-PBS in a different storage buffer formulation.