

For Research Use Only

FBXL6 Polyclonal antibody

Catalog Number: 33265-1-AP



Basic Information

Catalog Number:

33265-1-AP

Size:

150ul , Concentration: 450 ug/ml by Nanodrop;

Source:

Rabbit

Isotype:

IgG

Immunogen Catalog Number:

AG36604

GenBank Accession Number:

NM_012162.3

GeneID (NCBI):

26233

UNIPROT ID:

Q8N531

Full Name:

F-box and leucine-rich repeat protein 6

Calculated MW:

59kDa 539aa

Observed MW:

60 kDa

Purification Method:

Antigen affinity Purification

Recommended Dilutions:

WB: 1:500-1:2000

Applications

Tested Applications:

WB, ELISA

Species Specificity:

human

Positive Controls:

WB : 786-O cells, ACHN cells, HeLa cells, MCF-7 cells

Background Information

FBXL6 is an F-box/LRR-type E3 ubiquitin ligase that serves as the substrate-recognition subunit of the SCF complex. It stabilizes HSP90AA1 via K63-linked ubiquitination to activate c-MYC and drive hepatocellular carcinoma progression, while also degrading defective mitochondrial ribosomal proteins to preserve mitochondrial proteostasis. Its overexpression correlates with poor prognosis in renal and colorectal cancers and can promote cell proliferation by down-regulating RPL11 to activate the MDM2-p53 axis.

Storage

Storage:

Store at -20°C. Stable for one year after shipment.

Storage Buffer:

PBS with 0.02% sodium azide and 50% glycerol, pH7.3

Aliquoting is unnecessary for -20°C storage

*** 20ul sizes contain 0.1% BSA

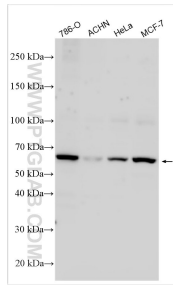
For technical support and original validation data for this product please contact:

T: 1 (888) 4PTGLAB (1-888-478-4522) (toll free in USA), or 1(312) 455-8498 (outside USA)

E: proteintech@ptglab.com
W: ptglab.com

This product is exclusively available under Proteintech Group brand and is not available to purchase from any other manufacturer.

Selected Validation Data



Various lysates were subjected to SDS PAGE followed by western blot with 33265-1-AP (FBXL6 antibody) at dilution of 1:1000 incubated at room temperature for 1.5 hours.