

For Research Use Only

TSPYL6 Polyclonal antibody

Catalog Number: 33274-1-AP

Featured Product



Basic Information

Catalog Number:

33274-1-AP

Size:

150ul , Concentration: 440 ug/ml by Nanodrop;

Source:

Rabbit

Isotype:

IgG

Immunogen Catalog Number:

AG38157

GenBank Accession Number:

BC068576

GeneID (NCBI):

388951

UNIPROT ID:

Q8N831

Full Name:

TSPY-like 6

Calculated MW:

410 aa, 46 kDa

Observed MW:

60 kDa

Purification Method:

Antigen affinity Purification

Recommended Dilutions:

WB: 1:500-1:3000

Applications

Tested Applications:

WB, ELISA

Species Specificity:

human

Positive Controls:

WB : K-562 cells,

Background Information

TSPYL6 (TSPY-like 6) protein is a member of the TSPY-like nucleoprotein family, and its specific physiological function has not yet been fully elucidated. However, this protein has garnered significant attention in cancer research as "an important tumor biomarker". Studies have shown that TSPYL6 is frequently overexpressed in various malignant tumors, such as breast cancer, lung cancer, colorectal cancer, and hepatocellular carcinoma. Its overexpression promotes tumor cell proliferation, invasion, and metastasis, while inhibiting apoptosis, and is closely associated with poor patient prognosis. Mechanistically, TSPYL6 is believed to exert its cancer-promoting effects by influencing cell cycle progression (e.g., promoting the G1/S phase transition) and regulating key oncogenic signaling pathways such as Wnt/ β -catenin. Therefore, TSPYL6 is not only a potential diagnostic and prognostic biomarker but also considered a potential therapeutic target for cancer.

Storage

Storage:

Store at -20°C. Stable for one year after shipment.

Storage Buffer:

PBS with 0.02% sodium azide and 50% glycerol, pH7.3

Aliquoting is unnecessary for -20°C storage

*** 20ul sizes contain 0.1% BSA

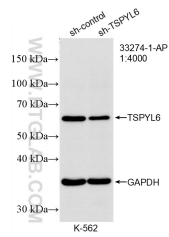
For technical support and original validation data for this product please contact:

T: 1 (888) 4PTGLAB (1-888-478-4522) (toll free in USA), or 1(312) 455-8498 (outside USA)

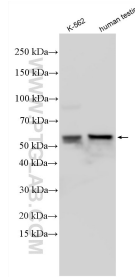
E: proteintech@ptglab.com
W: ptglab.com

This product is exclusively available under Proteintech Group brand and is not available to purchase from any other manufacturer.

Selected Validation Data



WB result of TSPYL6 antibody (33274-1-AP; 1:4000; incubated at room temperature for 1.5 hours) with sh-Control and sh-TSPYL6 transfected K-562 cells.



Various lysates were subjected to SDS PAGE followed by western blot with 33274-1-AP (TSPYL6 antibody) at dilution of 1:1500 incubated at room temperature for 1.5 hours.