

For Research Use Only

hCG Beta Polyclonal antibody

Catalog Number:33278-1-AP



Basic Information

Catalog Number: 33278-1-AP	GenBank Accession Number: BC051378	Purification Method: Antigen affinity Purification
Size: 150ul , Concentration: 400 ug/ml by Nanodrop;	GeneID (NCBI): 93659	Recommended Dilutions: WB: 1:1000-1:6000 IHC: 1:300-1:1200
Source: Rabbit	UNIPROT ID: PODN86	
Isotype: IgG	Full Name: chorionic gonadotropin, beta polypeptide 5	
Immunogen Catalog Number: AG38044	Calculated MW: 165 aa, 18 kDa	
	Observed MW: 19, 21 kDa	

Applications

Tested Applications: WB, IHC, ELISA	Positive Controls: WB : JAR cells, Forskolin treated JAR cells
Species Specificity: human	IHC : human placenta tissue,

Note-IHC: suggested antigen retrieval with TE buffer pH 9.0; (*) Alternatively, antigen retrieval may be performed with citrate buffer pH 6.0

Background Information

Beta-hCG (beta-human chorionic gonadotropin) is a glycoprotein hormone produced by the placenta during pregnancy. It is a critical marker used in both obstetrics and oncology for various diagnostic and monitoring purposes. hCG is composed of two subunits: an alpha subunit (similar to other glycoprotein hormones like LH, FSH, and TSH) and a unique beta subunit (β -hCG). The beta subunit is the primary focus for diagnostic tests due to its specificity. β -hCG is initially secreted by the syncytiotrophoblast cells surrounding the developing embryo and later by the placenta.

Storage

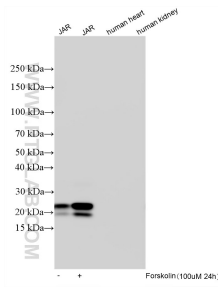
Storage:
Store at -20°C. Stable for one year after shipment.
Storage Buffer:
PBS with 0.02% sodium azide and 50% glycerol, pH7.3
Aliquoting is unnecessary for -20°C storage

*** 20ul sizes contain 0.1% BSA

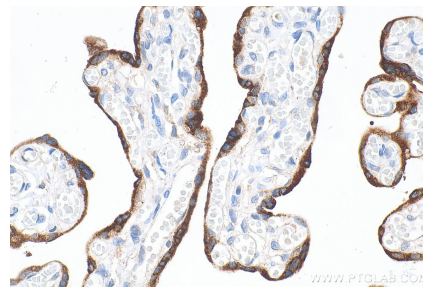
For technical support and original validation data for this product please contact:
T: 1 (888) 4PTGLAB (1-888-478-4522) (toll free in USA), or 1(312) 455-8498 (outside USA)
E: proteintech@ptglab.com
W: ptglab.com

This product is exclusively available under Proteintech Group brand and is not available to purchase from any other manufacturer.

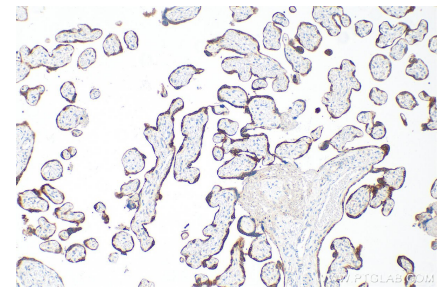
Selected Validation Data



Various lysates were subjected to SDS PAGE followed by western blot with 33278-1-AP (hCG Beta antibody) at dilution of 1:3000 incubated at room temperature for 1.5 hours. Negative control: human heart tissue, human kidney tissue.



Immunohistochemical analysis of paraffin-embedded human placenta tissue slide using 33278-1-AP (hCG Beta antibody) at dilution of 1:600 (under 10x lens). Heat mediated antigen retrieval with Tris-EDTA buffer (pH 9.0).



Immunohistochemical analysis of paraffin-embedded human placenta tissue slide using 33278-1-AP (hCG Beta antibody) at dilution of 1:600 (under 40x lens). Heat mediated antigen retrieval with Tris-EDTA buffer (pH 9.0).