

For Research Use Only

hCG Beta Polyclonal antibody, PBS Only

Catalog Number: 33278-1-PBS



Basic Information

Catalog Number:

33278-1-PBS

Size:

100ug, Concentration: 1 mg/ml by Nanodrop;

Source:

Rabbit

Isotype:

IgG

Immunogen Catalog Number:

AG38044

GenBank Accession Number:

BC051378

GeneID (NCBI):

93659

UNIPROT ID:

P0DN86

Full Name:

chorionic gonadotropin, beta polypeptide 5

Calculated MW:

165 aa, 18 kDa

Observed MW:

19, 21 kDa

Purification Method:

Antigen affinity Purification

Applications

Tested Applications:

WB, IHC, Indirect ELISA

Species Specificity:

human

Background Information

Beta-hCG (beta-human chorionic gonadotropin) is a glycoprotein hormone produced by the placenta during pregnancy. It is a critical marker used in both obstetrics and oncology for various diagnostic and monitoring purposes. hCG is composed of two subunits: an alpha subunit (similar to other glycoprotein hormones like LH, FSH, and TSH) and a unique beta subunit (β -hCG). The beta subunit is the primary focus for diagnostic tests due to its specificity. β -hCG is initially secreted by the syncytiotrophoblast cells surrounding the developing embryo and later by the placenta.

Storage

Storage:

Store at -80°C.

Storage Buffer:

PBS only, pH7.3

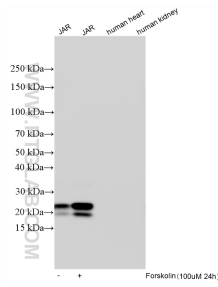
For technical support and original validation data for this product please contact:

T: 1 (888) 4PTGLAB (1-888-478-4522) (toll free in USA), or 1(312) 455-8498 (outside USA)

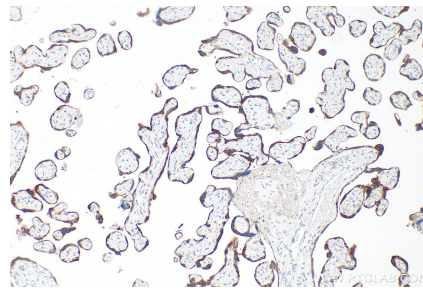
E: proteintech@ptglab.com
W: ptglab.com

This product is exclusively available under Proteintech Group brand and is not available to purchase from any other manufacturer.

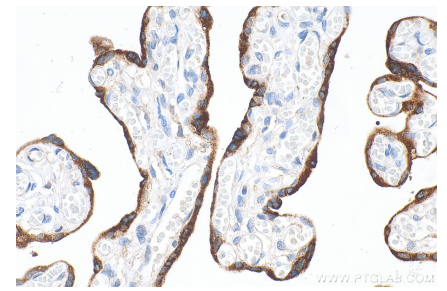
Selected Validation Data



Various lysates were subjected to SDS PAGE followed by western blot with 33278-1-AP (hCG Beta antibody) at dilution of 1:3000 incubated at room temperature for 1.5 hours. Negative control: human heart tissue, human kidney tissue. This data was developed using the same antibody clone with 33278-1-PBS in a different storage buffer formulation.



Immunohistochemical analysis of paraffin-embedded human placenta tissue slide using 33278-1-AP (hCG Beta antibody) at dilution of 1:600 (under 40x lens). Heat mediated antigen retrieval with Tris-EDTA buffer (pH 9.0). This data was developed using the same antibody clone with 33278-1-PBS in a different storage buffer formulation.



Immunohistochemical analysis of paraffin-embedded human placenta tissue slide using 33278-1-AP (hCG Beta antibody) at dilution of 1:600 (under 10x lens). Heat mediated antigen retrieval with Tris-EDTA buffer (pH 9.0). This data was developed using the same antibody clone with 33278-1-PBS in a different storage buffer formulation.