

For Research Use Only

XPC Polyclonal antibody

Catalog Number: 33279-1-AP



Basic Information

Catalog Number: 33279-1-AP	GenBank Accession Number: NM_004628.4	Purification Method: Antigen affinity Purification
Size: 150ul , Concentration: 340 ug/ml by Nanodrop;	GeneID (NCBI): 7508	Recommended Dilutions: WB: 1:1000-1:4000
Source: Rabbit	UNIPROT ID: Q01831	
Isotype: IgG	Full Name: xeroderma pigmentosum, complementation group C	
Immunogen Catalog Number: AG38513	Calculated MW: 106kDa 940aa	
	Observed MW: 106-120 kDa	

Applications

Tested Applications: WB, ELISA	Positive Controls: WB : HEK-293 cells, HeLa cells, K-562 cells
Species Specificity: human	

Background Information

XPC (DNA repair protein complementing XP-C cells) protein is a pivotal DNA damage recognition factor that plays an indispensable role in the global-genome nucleotide excision repair (GG-NER) pathway. As the primary initiator of GG-NER, it acts as a universal sensor for a wide array of helix-distorting DNA lesions, including those induced by ultraviolet (UV) radiation and chemical carcinogens. Upon binding to damaged DNA, the XPC complex orchestrates the recruitment of the entire repair machinery, serving as a critical guardian of genomic integrity. The calculated molecular weight of XPC is about 106 kDa, but due to post-translational modifications, about 120 kDa will be observed.

Storage

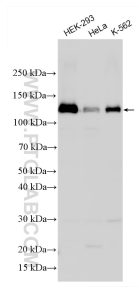
Storage:
Store at -20°C. Stable for one year after shipment.
Storage Buffer:
PBS with 0.02% sodium azide and 50% glycerol, pH7.3
Aliquoting is unnecessary for -20°C storage

*** 20ul sizes contain 0.1% BSA

For technical support and original validation data for this product please contact:
T: 1 (888) 4PTGLAB (1-888-478-4522) (toll free in USA), or 1(312) 455-8498 (outside USA)
E: proteintech@ptglab.com
W: ptglab.com

This product is exclusively available under Proteintech Group brand and is not available to purchase from any other manufacturer.

Selected Validation Data



Various lysates were subjected to SDS PAGE followed by western blot with 33279-1-AP (XPC antibody) at dilution of 1:2000 incubated at room temperature for 1.5 hours.