

For Research Use Only

# XPC Polyclonal antibody, PBS Only

Catalog Number:33279-1-PBS



## Basic Information

<b>Catalog Number:</b> 33279-1-PBS	<b>GenBank Accession Number:</b> NM_004628.4	<b>Purification Method:</b> Antigen affinity Purification
<b>Size:</b> 100ug , Concentration: 1 mg/ml by Nanodrop;	<b>GeneID (NCBI):</b> 7508	
<b>Source:</b> Rabbit	<b>UNIPROT ID:</b> Q01831	
<b>Isotype:</b> IgG	<b>Full Name:</b> xeroderma pigmentosum, complementation group C	
<b>Immunogen Catalog Number:</b> AG38513	<b>Calculated MW:</b> 106kDa 940aa	
	<b>Observed MW:</b> 106-120 kDa	

## Applications

**Tested Applications:**  
WB, Indirect ELISA

**Species Specificity:**  
human

## Background Information

XPC (DNA repair protein complementing XP-C cells) protein is a pivotal DNA damage recognition factor that plays an indispensable role in the global-genome nucleotide excision repair (GG-NER) pathway. As the primary initiator of GG-NER, it acts as a universal sensor for a wide array of helix-distorting DNA lesions, including those induced by ultraviolet (UV) radiation and chemical carcinogens. Upon binding to damaged DNA, the XPC complex orchestrates the recruitment of the entire repair machinery, serving as a critical guardian of genomic integrity. The calculated molecular weight of XPC is about 106 kDa, but due to post-translational modifications, about 120 kDa will be observed.

## Storage

**Storage:**  
Store at -80°C.

**Storage Buffer:**  
PBS only, pH7.3

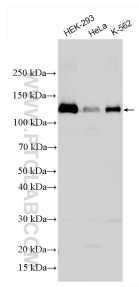
For technical support and original validation data for this product please contact:

T: 1 (888) 4PTGLAB (1-888-478-4522) (toll free in USA), or 1(312) 455-8498 (outside USA)

E: [proteintech@ptglab.com](mailto:proteintech@ptglab.com)  
W: [ptglab.com](http://ptglab.com)

**This product is exclusively available under Proteintech Group brand and is not available to purchase from any other manufacturer.**

## Selected Validation Data



Various lysates were subjected to SDS PAGE followed by western blot with 33279-1-AP (XPC antibody) at dilution of 1:2000 incubated at room temperature for 1.5 hours. This data was developed using the same antibody clone with 33279-1-PBS in a different storage buffer formulation.