

For Research Use Only

Mrgprx1 Polyclonal antibody

Catalog Number:33332-1-AP



Basic Information

Catalog Number:

33332-1-AP

Size:

150ul , Concentration: 850 ug/ml by Nanodrop;

Source:

Rabbit

Isotype:

IgG

GenBank Accession Number:

NM_207540

GeneID (NCBI):

404242

UNIPROT ID:

Q8CIP3

Full Name:

MAS-related GPR, member X1

Calculated MW:

322aa, 37 kDa

Observed MW:

35 kDa

Purification Method:

Antigen affinity Purification

Recommended Dilutions:

WB: 1:500-1:2000

Applications

Tested Applications:

WB, ELISA

Species Specificity:

mouse, rat

Positive Controls:

WB : mouse liver tissue, rat heart tissue

Background Information

MRGPRX1 is a MAS-related G protein-coupled receptor (GPCR) primarily expressed in dorsal root ganglion (DRG) neurons and is a key receptor for itch perception. It can be activated by various endogenous peptides and exogenous ligands, triggering itch and pain signals through Gi and Gq signaling pathways. The activation of MRGPRX1 not only induces the sensation of itch in peripheral neurons but also inhibits neurotransmitter release in the spinal cord via the Gi1 pathway, alleviating chronic pain. Additionally, the structure and activation mechanism of MRGPRX1 have been elucidated, with its unique ligand-binding pocket and activation process providing a theoretical basis for the development of novel analgesic and antipruritic drugs.

Storage

Storage:

Store at -20°C. Stable for one year after shipment.

Storage Buffer:

PBS with 0.02% sodium azide and 50% glycerol, pH7.3

Aliquoting is unnecessary for -20°C storage

*** 20ul sizes contain 0.1% BSA

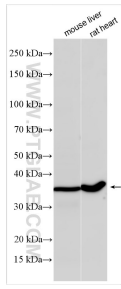
For technical support and original validation data for this product please contact:

T: 1 (888) 4PTGLAB (1-888-478-4522) (toll free in USA), or 1(312) 455-8498 (outside USA)

E: proteintech@ptglab.com
W: ptglab.com

This product is exclusively available under Proteintech Group brand and is not available to purchase from any other manufacturer.

Selected Validation Data



Various lysates were subjected to SDS PAGE followed by western blot with 33332-1-AP (Mrgprx1 antibody) at dilution of 1:1000 incubated at room temperature for 1.5 hours.