

For Research Use Only

ARMS2 Polyclonal antibody, PBS Only

Catalog Number: 33334-1-PBS



Basic Information

Catalog Number: 33334-1-PBS	GenBank Accession Number: NM_001099667	Purification Method: Antigen affinity Purification
Size: 100ug , Concentration: 1 mg/ml by Nanodrop;	GeneID (NCBI): 387715	
Source: Rabbit	UNIPROT ID: POC7Q2	
Isotype: IgG	Full Name: age-related maculopathy susceptibility 2	
Immunogen Catalog Number: AG37837	Calculated MW: 107aa, 11 kDa	

Applications

Tested Applications:
IHC, Indirect ELISA

Species Specificity:
human, mouse

Background Information

Age-related maculopathy susceptibility 2 (ARMS2) is a small (11 kDa), primate-specific protein found in the extracellular matrix of the choroid layer in the eye. Variants in the corresponding genetic locus are highly associated with age-related macular degeneration, a leading cause of blindness in the elderly (PMID: 27270414).

Storage

Storage:
Store at -80°C.

Storage Buffer:
PBS only, pH7.3

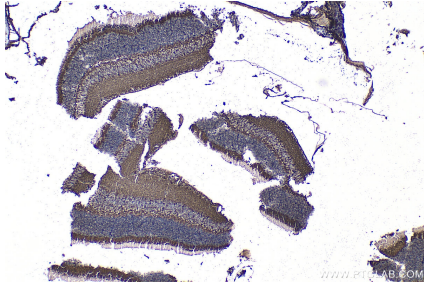
For technical support and original validation data for this product please contact:

T: 1 (888) 4PTGLAB (1-888-478-4522) (toll free in USA), or 1(312) 455-8498 (outside USA)

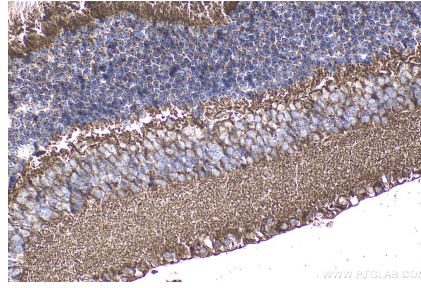
E: proteintech@ptglab.com
W: ptglab.com

This product is exclusively available under Proteintech Group brand and is not available to purchase from any other manufacturer.

Selected Validation Data



Immunohistochemical analysis of paraffin-embedded mouse eye tissue slide using 33334-1-AP (ARMS2 antibody) at dilution of 1:200 (under 10x lens). Heat mediated antigen retrieval with Tris-EDTA buffer (pH 9.0). This data was developed using the same antibody clone with 33334-1-PBS in a different storage buffer formulation.



Immunohistochemical analysis of paraffin-embedded mouse eye tissue slide using 33334-1-AP (ARMS2 antibody) at dilution of 1:200 (under 40x lens). Heat mediated antigen retrieval with Tris-EDTA buffer (pH 9.0). This data was developed using the same antibody clone with 33334-1-PBS in a different storage buffer formulation.