

For Research Use Only

# IGFL4 Polyclonal antibody

Catalog Number: 33339-1-AP



## Basic Information

<b>Catalog Number:</b> 33339-1-AP	<b>GenBank Accession Number:</b> NM_001002923	<b>Purification Method:</b> Antigen affinity Purification
<b>Size:</b> 150ul , Concentration: 350 ug/ml by Nanodrop;	<b>GeneID (NCBI):</b> 444882	<b>Recommended Dilutions:</b> IHC: 1:50-1:500
<b>Source:</b> Rabbit	<b>UNIPROT ID:</b> Q6B9Z1	
<b>Isotype:</b> IgG	<b>Full Name:</b> IGF-like family member 4	
<b>Immunogen Catalog Number:</b> AG37543	<b>Calculated MW:</b> 14 kDa	

## Applications

<b>Tested Applications:</b> IHC, ELISA	<b>Positive Controls:</b> IHC : mouse cerebellum tissue,
<b>Species Specificity:</b> human, mouse	
<b>Note-IHC: suggested antigen retrieval with TE buffer pH 9.0; (*) Alternatively, antigen retrieval may be performed with citrate buffer pH 6.0</b>	

## Background Information

IGFL (Insulin-like growth factor like family) encode a family of small secreted proteins in Homo sapiens and Mus musculus. This family consists of four genes and two pseudogenes (IGFL1-4 and IGFL1P1-2). IGFL1 is expressed in the ovary and spinal cord. IGFL2 is expressed in the cerebellum, heart, placenta, spleen, stomach, testis and thymus. IGFL3 and IGFL4 are expressed in the cerebellum. The IGFL4 protein binds to the insulin-like growth factor receptor (IGF-1R) and the insulin receptor (IR), thereby activating downstream signaling pathways such as the PI3K/AKT and MAPK pathway.(PMID: 16890402).

## Storage

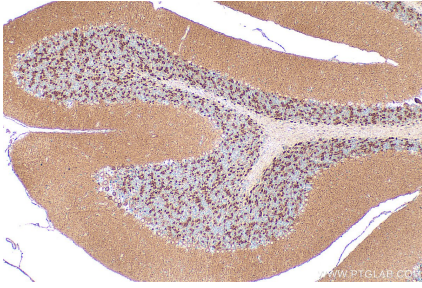
**Storage:**  
Store at -20°C. Stable for one year after shipment.  
**Storage Buffer:**  
PBS with 0.02% sodium azide and 50% glycerol, pH7.3  
Aliquoting is unnecessary for -20°C storage

\*\*\* 20ul sizes contain 0.1% BSA

For technical support and original validation data for this product please contact:  
T: 1 (888) 4PTGLAB (1-888-478-4522) (toll free in USA), or 1(312) 455-8498 (outside USA)  
E: proteintech@ptglab.com  
W: ptglab.com

This product is exclusively available under Proteintech Group brand and is not available to purchase from any other manufacturer.

## Selected Validation Data



Immunohistochemical analysis of paraffin-embedded mouse cerebellum tissue slide using 33339-1-AP (IGFL4 antibody) at dilution of 1:200 (under 10x lens). Heat mediated antigen retrieval with Tris-EDTA buffer (pH 9.0).