

For Research Use Only

IGFL4 Polyclonal antibody, PBS Only

Catalog Number: 33339-1-PBS



Basic Information

Catalog Number: 33339-1-PBS	GenBank Accession Number: NM_001002923	Purification Method: Antigen affinity Purification
Size: 100ug , Concentration: 1 mg/ml by Nanodrop;	GeneID (NCBI): 444882	
Source: Rabbit	UNIPROT ID: Q6B9Z1	
Isotype: IgG	Full Name: IGF-like family member 4	
Immunogen Catalog Number: AG37543	Calculated MW: 14 kDa	

Applications

Tested Applications:
IHC, Indirect ELISA

Species Specificity:
human, mouse

Background Information

IGFL (Insulin-like growth factor like family) encode a family of small secreted proteins in Homo sapiens and Mus musculus. This family consists of four genes and two pseudogenes (IGFL1-4 and IGFL1P1-2). IGFL1 is expressed in the ovary and spinal cord. IGFL2 is expressed in the cerebellum, heart, placenta, spleen, stomach, testis and thymus. IGFL3 and IGFL4 are expressed in the cerebellum. The IGFL4 protein binds to the insulin-like growth factor receptor (IGF-1R) and the insulin receptor (IR), thereby activating downstream signaling pathways such as the PI3K/AKT and MAPK pathway. (PMID: 16890402).

Storage

Storage:
Store at -80°C.

Storage Buffer:
PBS only, pH7.3

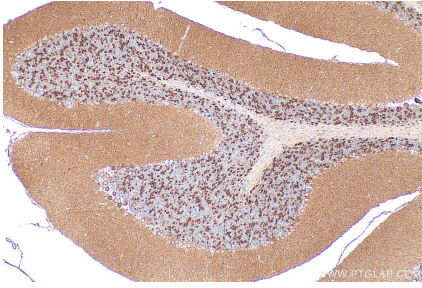
For technical support and original validation data for this product please contact:

T: 1 (888) 4PTGLAB (1-888-478-4522) (toll free
in USA), or 1(312) 455-8498 (outside USA)

E: proteintech@ptglab.com
W: ptglab.com

This product is exclusively available under Proteintech Group brand and is not available to purchase from any other manufacturer.

Selected Validation Data



Immunohistochemical analysis of paraffin-embedded mouse cerebellum tissue slide using 33339-1-AP (IGFL4 antibody) at dilution of 1:200 (under 10x lens). Heat mediated antigen retrieval with Tris-EDTA buffer (pH 9.0). This data was developed using the same antibody clone with 33339-1-PBS in a different storage buffer formulation.