

For Research Use Only

GPR37L1 Polyclonal antibody

Catalog Number: 33358-1-AP



Basic Information

Catalog Number: 33358-1-AP	GenBank Accession Number: NM_004767.3	Purification Method: Antigen affinity Purification
Size: 150ul , Concentration: 650 ug/ml by Nanodrop;	GeneID (NCBI): 9283	Recommended Dilutions: WB: 1:500-1:3000
Source: Rabbit	UNIPROT ID: O60883	
Isotype: IgG	Full Name: G protein-coupled receptor 37 like 1	
Immunogen Catalog Number: AG36603	Calculated MW: 53kDa 481aa	
	Observed MW: 70 kDa	

Applications

Tested Applications: WB, ELISA	Positive Controls: WB : mouse brain tissue, rat brain tissue
Species Specificity: human, mouse, rat	

Background Information

GPR37L1 (G Protein-Coupled Receptor 37 Like 1) is a protein that belongs to the large and diverse family of G protein-coupled receptors (GPCRs). GPCRs are crucial cellular sensors, spanning the cell membrane to transmit signals from the outside to the inside of the cell, governing virtually every physiological process. The apparent molecular weight is larger than the calculated molecular weight of 53 kDa, which is likely due to posttranslational modification, presumably by glycosylation.

Storage

Storage:
Store at -20°C. Stable for one year after shipment.
Storage Buffer:
PBS with 0.02% sodium azide and 50% glycerol, pH7.3
Aliquoting is unnecessary for -20°C storage

*** 20ul sizes contain 0.1% BSA

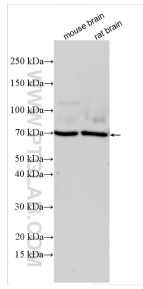
For technical support and original validation data for this product please contact:

T: 1 (888) 4PTGLAB (1-888-478-4522) (toll free in USA), or 1(312) 455-8498 (outside USA)

E: proteintech@ptglab.com
W: ptglab.com

This product is exclusively available under Proteintech Group brand and is not available to purchase from any other manufacturer.

Selected Validation Data



Various lysates were subjected to SDS PAGE followed by western blot with 33358-1-AP (GPR37L1 antibody) at dilution of 1:1500 incubated at room temperature for 1.5 hours.