

For Research Use Only

# GPR37L1 Polyclonal antibody, PBS Only

Catalog Number: 33358-1-PBS



## Basic Information

<b>Catalog Number:</b> 33358-1-PBS	<b>GenBank Accession Number:</b> NM_004767.3	<b>Purification Method:</b> Antigen affinity Purification
<b>Size:</b> 100ug , Concentration: 1 mg/ml by Nanodrop;	<b>GeneID (NCBI):</b> 9283	
<b>Source:</b> Rabbit	<b>UNIPROT ID:</b> O60883	
<b>Isotype:</b> IgG	<b>Full Name:</b> G protein-coupled receptor 37 like 1	
<b>Immunogen Catalog Number:</b> AG36603	<b>Calculated MW:</b> 53kDa 481aa	
	<b>Observed MW:</b> 70 kDa	

## Applications

**Tested Applications:**  
WB, Indirect ELISA

**Species Specificity:**  
human, mouse, rat

## Background Information

GPR37L1 (G Protein-Coupled Receptor 37 Like 1) is a protein that belongs to the large and diverse family of G protein-coupled receptors (GPCRs). GPCRs are crucial cellular sensors, spanning the cell membrane to transmit signals from the outside to the inside of the cell, governing virtually every physiological process. The apparent molecular weight is larger than the calculated molecular weight of 53 kDa, which is likely due to posttranslational modification, presumably by glycosylation.

## Storage

**Storage:**  
Store at -80°C.

**Storage Buffer:**  
PBS only, pH7.3

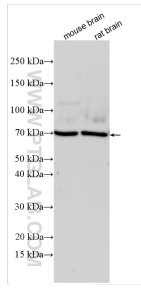
For technical support and original validation data for this product please contact:

T: 1 (888) 4PTGLAB (1-888-478-4522) (toll free in USA), or 1(312) 455-8498 (outside USA)

E: [proteintech@ptglab.com](mailto:proteintech@ptglab.com)  
W: [ptglab.com](http://ptglab.com)

**This product is exclusively available under Proteintech Group brand and is not available to purchase from any other manufacturer.**

## Selected Validation Data



Various lysates were subjected to SDS PAGE followed by western blot with 33358-1-AP (GPR37L1 antibody) at dilution of 1:1500 incubated at room temperature for 1.5 hours. This data was developed using the same antibody clone with 33358-1-PBS in a different storage buffer formulation.