

For Research Use Only

Luteinizing Hormone beta Polyclonal antibody

Catalog Number: 33363-1-AP



Basic Information

Catalog Number: 33363-1-AP	GenBank Accession Number: NM_000894	Purification Method: Antigen affinity Purification
Size: 150ul , Concentration: 650 ug/ml by Nanodrop;	GeneID (NCBI): 3972	Recommended Dilutions: WB: 1:500-1:3000
Source: Rabbit	UNIPROT ID: P01229	
Isotype: IgG	Full Name: luteinizing hormone beta polypeptide	
Immunogen Catalog Number: AG38132	Calculated MW: 15 kDa	
	Observed MW: 15-18 kDa	

Applications

Tested Applications: WB, ELISA	Positive Controls: WB : fetal human brain tissue,
Species Specificity: human	

Background Information

Luteinizing Hormone beta subunit (LH- β) is a critical glycoprotein hormone chain that confers functional specificity to the intact LH hormone. While it non-covalently associates with the common alpha subunit (shared with other pituitary hormones like FSH and TSH), the unique beta subunit is responsible for dictating receptor binding specificity. The binding of LH to its receptor in the gonads is primarily mediated by the beta subunit, triggering signaling cascades essential for reproductive physiology. In females, this stimulates ovulation and progesterone production, and in males, it drives testosterone synthesis in Leydig cells. Therefore, the expression and structural integrity of the LH- β gene are indispensable for the regulation of steroidogenesis and gametogenesis, making it a cornerstone of the hypothalamic-pituitary-gonadal axis.

Storage

Storage:
Store at -20°C. Stable for one year after shipment.
Storage Buffer:
PBS with 0.02% sodium azide and 50% glycerol, pH7.3
Aliquoting is unnecessary for -20°C storage

*** 20ul sizes contain 0.1% BSA

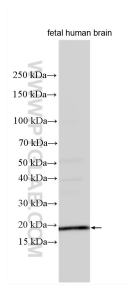
For technical support and original validation data for this product please contact:

T: 1 (888) 4PTGLAB (1-888-478-4522) (toll free in USA), or 1(312) 455-8498 (outside USA)

E: proteintech@ptglab.com
W: ptglab.com

This product is exclusively available under Proteintech Group brand and is not available to purchase from any other manufacturer.

Selected Validation Data



Fetal human brain tissue lysates were subjected to SDS PAGE followed by western blot with 33363-1-AP (Luteinizing Hormone beta antibody) at dilution of 1:1500 incubated at room temperature for 1.5 hours.