

For Research Use Only

# Luteinizing Hormone beta Polyclonal antibody, PBS Only

Catalog Number: 33363-1-PBS



## Basic Information

<b>Catalog Number:</b> 33363-1-PBS	<b>GenBank Accession Number:</b> NM_000894	<b>Purification Method:</b> Antigen affinity Purification
<b>Size:</b> 100ug, Concentration: 1 mg/ml by Nanodrop;	<b>GeneID (NCBI):</b> 3972	
<b>Source:</b> Rabbit	<b>UNIPROT ID:</b> P01229	
<b>Isotype:</b> IgG	<b>Full Name:</b> Luteinizing hormone beta polypeptide	
<b>Immunogen Catalog Number:</b> AG38132	<b>Calculated MW:</b> 15 kDa	
	<b>Observed MW:</b> 15-18 kDa	

## Applications

**Tested Applications:**  
WB, Indirect ELISA

**Species Specificity:**  
human

## Background Information

Luteinizing Hormone beta subunit (LH- $\beta$ ) is a critical glycoprotein hormone chain that confers functional specificity to the intact LH hormone. While it non-covalently associates with the common alpha subunit (shared with other pituitary hormones like FSH and TSH), the unique beta subunit is responsible for dictating receptor binding specificity. The binding of LH to its receptor in the gonads is primarily mediated by the beta subunit, triggering signaling cascades essential for reproductive physiology. In females, this stimulates ovulation and progesterone production, and in males, it drives testosterone synthesis in Leydig cells. Therefore, the expression and structural integrity of the LH- $\beta$  gene are indispensable for the regulation of steroidogenesis and gametogenesis, making it a cornerstone of the hypothalamic-pituitary-gonadal axis.

## Storage

**Storage:**  
Store at -80°C.

**Storage Buffer:**  
PBS only, pH7.3

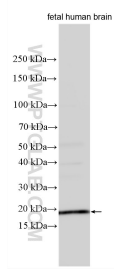
For technical support and original validation data for this product please contact:

T: 1 (888) 4PTGLAB (1-888-478-4522) (toll free in USA), or 1(312) 455-8498 (outside USA)

E: [proteintech@ptglab.com](mailto:proteintech@ptglab.com)  
W: [ptglab.com](http://ptglab.com)

**This product is exclusively available under Proteintech Group brand and is not available to purchase from any other manufacturer.**

## Selected Validation Data



Fetal human brain tissue lysates were subjected to SDS PAGE followed by western blot with 33363-1-AP (Luteinizing Hormone beta antibody) at dilution of 1:1500 incubated at room temperature for 1.5 hours. This data was developed using the same antibody clone with 33363-1-PBS in a different storage buffer formulation.