

For Research Use Only

MED29 Polyclonal antibody

Catalog Number: 33366-1-AP



Basic Information

Catalog Number: 33366-1-AP	GenBank Accession Number: NM_017592.2	Purification Method: Antigen affinity Purification
Size: 150ul , Concentration: 400 ug/ml by Nanodrop;	GeneID (NCBI): 55588	Recommended Dilutions: WB: 1:500-1:2000 IP: 0.5-4.0 ug for 1.0-3.0 mg of total protein lysate IHC: 1:200-1:800
Source: Rabbit	UNIPROT ID: Q9NX70	
Isotype: IgG	Full Name: mediator complex subunit 29	
Immunogen Catalog Number: AG38949	Calculated MW: 21kDa 200aa	
	Observed MW: 21-25 kDa	

Applications

Tested Applications: WB, IHC, IP, ELISA	Positive Controls: WB : HEK-293T cells, HT-29 cells IP : HT-29 cells, IHC : human ovary cancer tissue,
Species Specificity: human	
Note-IHC: suggested antigen retrieval with TE buffer pH 9.0; (*) Alternatively, antigen retrieval may be performed with citrate buffer pH 6.0	

Background Information

Mediator of RNA polymerase II transcription subunit 29 (MED29) is also named as Mediator complex subunit 29 and Intersex-like protein (IXL). MED29 is one of the most highly conserved proteins across species and is widely expressed in humans both during embryonic development and in adult tissues (PMID: 15555573). MED29 was overexpressed in pancreatic cancer and promoted pancreatic cancer cell viability (PMID: 21225629, PMID: 17332321). MED29 facilitated the epithelial-mesenchymal transition process in OSCC, thereby promoting migration and invasion (PMID: 39462350).

Storage

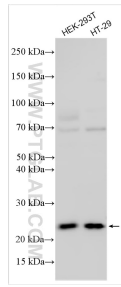
Storage:
Store at -20°C. Stable for one year after shipment.
Storage Buffer:
PBS with 0.02% sodium azide and 50% glycerol, pH7.3
Aliquoting is unnecessary for -20°C storage

*** 20ul sizes contain 0.1% BSA

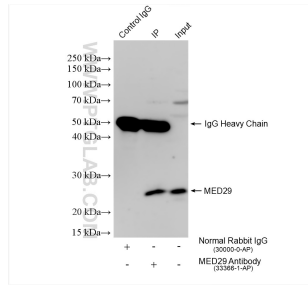
For technical support and original validation data for this product please contact:
T: 1 (888) 4PTGLAB (1-888-478-4522) (toll free in USA), or 1(312) 455-8498 (outside USA)
E: proteintech@ptglab.com
W: ptglab.com

This product is exclusively available under Proteintech Group brand and is not available to purchase from any other manufacturer.

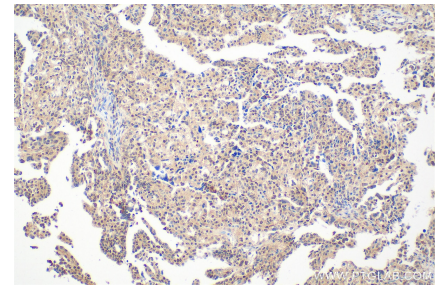
Selected Validation Data



Various lysates were subjected to SDS PAGE followed by western blot with 33366-1-AP (MED29 antibody) at dilution of 1:1000 incubated at room temperature for 1.5 hours.



IP result of anti-MED29 (IP:33366-1-AP, 4ug; Detection:33366-1-AP 1:800) with HT-29 cells lysate 1760 ug.



Immunohistochemical analysis of paraffin-embedded human ovary cancer tissue slide using 33366-1-AP (MED29 antibody) at dilution of 1:400 (under 20x lens). Heat mediated antigen retrieval with Tris-EDTA buffer (pH 9.0).