

For Research Use Only

CELA2A Polyclonal antibody

Catalog Number:33375-1-AP



Basic Information

Catalog Number:

33375-1-AP

Size:

150ul , Concentration: 400 ug/ml by Nanodrop;

Source:

Rabbit

Isotype:

IgG

Immunogen Catalog Number:

EG3064

GenBank Accession Number:

NM_007919.3

GeneID (NCBI):

13706

UNIPROT ID:

P05208

Full Name:

elastase 2A

Calculated MW:

29 kDa

Observed MW:

29 kDa

Purification Method:

Antigen affinity Purification

Recommended Dilutions:

WB: 1:2000-1:16000

Applications

Tested Applications:

WB, ELISA

Species Specificity:

mouse, rat

Positive Controls:

WB : mouse pancreas tissue, rat pancreas tissue

Background Information

CELA2A (Chymotrypsin-like elastase family member 2A), also known as Elastase-2A, is a circulating enzyme that reduces platelet hyperactivation, triggers both insulin secretion and degradation, and increases insulin sensitivity. ELA-2 is widely found in several organs such as lung, pancreas, liver, blood vessels (mesenteric, and carotid arteries), heart and kidney of rodents (PMID: 31358993, 28386233).

Storage

Storage:

Store at -20°C. Stable for one year after shipment.

Storage Buffer:

PBS with 0.02% sodium azide and 50% glycerol, pH7.3

Aliquoting is unnecessary for -20°C storage

*** 20ul sizes contain 0.1% BSA

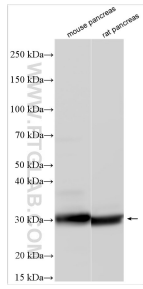
For technical support and original validation data for this product please contact:

T: 1 (888) 4PTGLAB (1-888-478-4522) (toll free in USA), or 1(312) 455-8498 (outside USA)

E: proteintech@ptglab.com
W: ptglab.com

This product is exclusively available under Proteintech Group brand and is not available to purchase from any other manufacturer.

Selected Validation Data



Various lysates were subjected to SDS PAGE followed by western blot with 33375-1-AP (CELA2A antibody) at dilution of 1:8000 incubated at room temperature for 1.5 hours.