

For Research Use Only

SLAMF6 Polyclonal antibody

Catalog Number:33396-1-AP



Basic Information

Catalog Number: 33396-1-AP	GenBank Accession Number: NML_030710.2	Purification Method: Antigen affinity Purification
Size: 150ul , Concentration: 450 ug/ml by Nanodrop;	GeneID (NCBI): 30925	Recommended Dilutions: WB: 1:1000-1:6000 IHC: 1:4000-1:16000
Source: Rabbit	UNIPROT ID: Q9ET39-2	
Isotype: IgG	Full Name: SLAM family member 6	
Immunogen Catalog Number: EG5249	Calculated MW: 36 kDa	
	Observed MW: 60 kDa	

Applications

Tested Applications:
WB, ELISA

Species Specificity:
mouse

Note-IHC: suggested antigen retrieval with TE buffer pH 9.0; (*) Alternatively, antigen retrieval may be performed with citrate buffer pH 6.0

Positive Controls:

WB : mouse spleen tissue, mouse thymus tissue

IHC : mouse spleen tissue, mouse colon tissue

Background Information

Signaling lymphocyte activation molecule 6 (SLAMF6) (Ly108 in mice, NTB-A or SF2000 in humans) is a homophilic receptor belonging to the superfamily immunoglobulin (Ig) domain-containing molecules (PMID:31199820). SLAMF6 is a type I transmembrane protein with two extracellular immunoglobins (Ig)-like domains and three cytoplasmic tyrosine-based signaling motifs, one of which is immunoreceptor tyrosine-based switch motif (PMID:31315913). SLAMF6 is expressed on a wide variety of immune cells including T cells (also TFH), B cells, NK cells (expressed in humans only), double positive thymocytes, eosinophils, and neutrophils (mouse only) (PMID:11862385).

Storage

Storage:
Store at -20°C. Stable for one year after shipment.
Storage Buffer:
PBS with 0.02% sodium azide and 50% glycerol, pH7.3
Aliquoting is unnecessary for -20°C storage

*** 20ul sizes contain 0.1% BSA

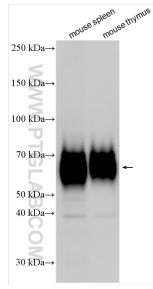
For technical support and original validation data for this product please contact:

T: 1 (888) 4PTGLAB (1-888-478-4522) (toll free in USA), or 1(312) 455-8498 (outside USA)

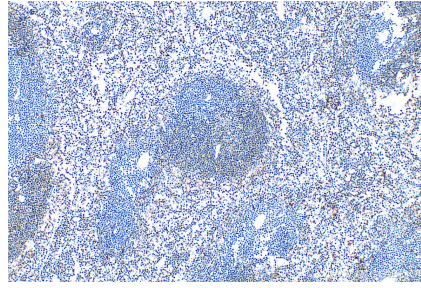
E: proteintech@ptglab.com
W: ptglab.com

This product is exclusively available under Proteintech Group brand and is not available to purchase from any other manufacturer.

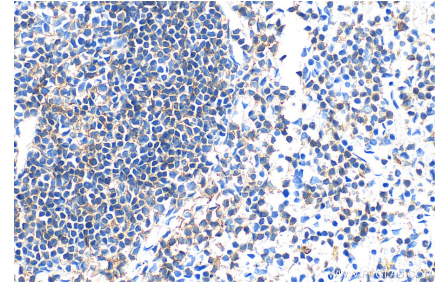
Selected Validation Data



Various lysates were subjected to SDS PAGE followed by western blot with 33396-1-AP (SLAMF6 antibody) at dilution of 1:3000 incubated at room temperature for 1.5 hours.



Immunohistochemical analysis of paraffin-embedded mouse spleen tissue slide using 33396-1-AP (SLAMF6 antibody) at dilution of 1:8000 (under 10x lens). Heat mediated antigen retrieval with Tris-EDTA buffer (pH 9.0).



Immunohistochemical analysis of paraffin-embedded mouse spleen tissue slide using 33396-1-AP (SLAMF6 antibody) at dilution of 1:8000 (under 40x lens). Heat mediated antigen retrieval with Tris-EDTA buffer (pH 9.0).