

For Research Use Only

# CD169 Polyclonal antibody

Catalog Number:33399-1-AP



## Basic Information

<b>Catalog Number:</b> 33399-1-AP	<b>GenBank Accession Number:</b> NP_035556	<b>Purification Method:</b> Antigen affinity Purification
<b>Size:</b> 150ul , Concentration: 500 ug/ml by Nanodrop;	<b>GeneID (NCBI):</b> 20612	<b>Recommended Dilutions:</b> WB: 1:500-1:2000 IHC: 1:200-1:800
<b>Source:</b> Rabbit	<b>UNIPROT ID:</b> Q62230-1	
<b>Isotype:</b> IgG	<b>Full Name:</b> sialic acid binding Ig-like lectin 1, sialoadhesin	
<b>Immunogen Catalog Number:</b> EG5002	<b>Calculated MW:</b> 183 kDa <b>Observed MW:</b> 200 kDa	

## Applications

### Tested Applications:

WB, IHC, ELISA

### Species Specificity:

mouse, rat

**Note-IHC: suggested antigen retrieval with TE buffer pH 9.0; (\*) Alternatively, antigen retrieval may be performed with citrate buffer pH 6.0**

### Positive Controls:

WB : mouse spleen tissue, rat spleen tissue

IHC : mouse spleen tissue, mouse liver tissue

## Background Information

CD169, also known as sheep erythrocyte receptor (SER), Sialoadhesin (Sn) or Siglec-1, is a sialic acid-binding immunoglobulin-like lectin that belongs to the SIGLEC family of the Ig superfamily (PMID: 3783087; 11133773). CD169 is a single-pass transmembrane protein containing a long extracellular domain, a transmembrane region, and a short cytoplasmic tail (PMID: 11133773). It is primarily expressed on the surface of specific macrophage subsets and its precursor monocytes, as well as on some DCs (PMID: 33408860). CD169 binds to sialic acid-containing glycoconjugates, particularly those with  $\alpha(2,3)$ -linkages. It is involved in immune regulation, pathogen recognition, and cell-cell interactions.

## Storage

### Storage:

Store at -20°C. Stable for one year after shipment.

### Storage Buffer:

PBS with 0.02% sodium azide and 50% glycerol, pH7.3

Aliquoting is unnecessary for -20°C storage

\*\*\* 20ul sizes contain 0.1% BSA

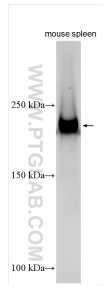
For technical support and original validation data for this product please contact:

T: 1 (888) 4PTGLAB (1-888-478-4522) (toll free in USA), or 1(312) 455-8498 (outside USA)

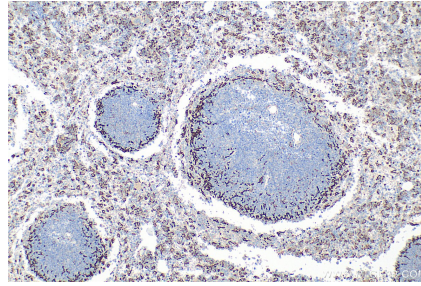
E: [proteintech@ptglab.com](mailto:proteintech@ptglab.com)  
W: [ptglab.com](http://ptglab.com)

This product is exclusively available under Proteintech Group brand and is not available to purchase from any other manufacturer.

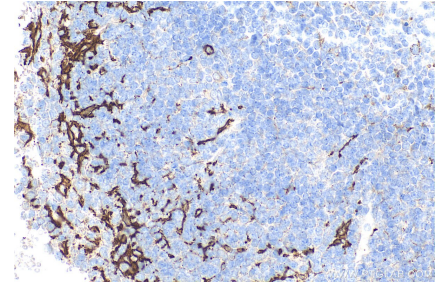
## Selected Validation Data



mouse spleen tissue was subjected to SDS-PAGE followed by western blot with 33399-1-AP (CD169 antibody) at dilution of 1:1000 incubated at room temperature for 1.5 hours.



Immunohistochemical analysis of paraffin-embedded mouse spleen tissue slide using 33399-1-AP (CD169 antibody) at dilution of 1:400 (under 10x lens). Heat mediated antigen retrieval with Tris-EDTA buffer (pH 9.0).



Immunohistochemical analysis of paraffin-embedded mouse spleen tissue slide using 33399-1-AP (CD169 antibody) at dilution of 1:400 (under 40x lens). Heat mediated antigen retrieval with Tris-EDTA buffer (pH 9.0).