

For Research Use Only

# REG Polyclonal antibody

Catalog Number: 33428-1-AP



## Basic Information

<b>Catalog Number:</b> 33428-1-AP	<b>GenBank Accession Number:</b> NM_009042.1	<b>Purification Method:</b> Antigen affinity Purification
<b>Size:</b> 150ul , Concentration: 460 ug/ml by Nanodrop;	<b>GeneID (NCBI):</b> 19692	<b>Recommended Dilutions:</b> WB: 1:500-1:2000
<b>Source:</b> Rabbit	<b>UNIPROT ID:</b> P43137	
<b>Isotype:</b> IgG	<b>Full Name:</b> regenerating islet-derived 1	
<b>Immunogen Catalog Number:</b> EG6797	<b>Calculated MW:</b> 19 kDa	
	<b>Observed MW:</b> 16 kDa	

## Applications

<b>Tested Applications:</b> WB, ELISA	<b>Positive Controls:</b> WB : mouse pancreas tissue, rat pancreas tissue
<b>Species Specificity:</b> mouse, rat	

## Background Information

The Reg gene family is a multigene family grouped into four subclasses, types I, II, III and IV, based on the primary structures of the encoded proteins. This gene encodes a protein that is secreted by the exocrine pancreas. It is associated with islet cell regeneration and diabetogenesis and may be involved in pancreatic lithogenesis. It's reported that REG1A was significantly upregulated in tumor specimens and adenoma as compared to normal colorectal tissue. (PMID: 34698109)

## Storage

**Storage:**  
Store at -20°C. Stable for one year after shipment.  
**Storage Buffer:**  
PBS with 0.02% sodium azide and 50% glycerol, pH7.3  
Aliquoting is unnecessary for -20°C storage

\*\*\* 20ul sizes contain 0.1% BSA

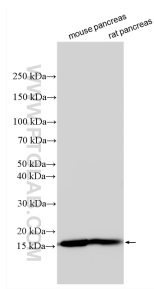
For technical support and original validation data for this product please contact:

T: 1 (888) 4PTGLAB (1-888-478-4522) (toll free in USA), or 1(312) 455-8498 (outside USA)

E: [proteintech@ptglab.com](mailto:proteintech@ptglab.com)  
W: [ptglab.com](http://ptglab.com)

This product is exclusively available under Proteintech Group brand and is not available to purchase from any other manufacturer.

## Selected Validation Data



Various lysates were subjected to SDS PAGE followed by western blot with 33428-1-AP (Reg1 antibody) at dilution of 1:1000 incubated at room temperature for 1.5 hours.