

For Research Use Only

GGT6 Polyclonal antibody

Catalog Number: 33436-1-AP



Basic Information

Catalog Number: 33436-1-AP	GenBank Accession Number: BC063111	Purification Method: Antigen affinity Purification
Size: 150ul , Concentration: 590 ug/ml by Nanodrop;	GeneID (NCBI): 124975	Recommended Dilutions: WB: 1:1000-1:6000 IF/ICC: 1:200-1:800
Source: Rabbit	UNIPROT ID: Q6P531	
Isotype: IgG	Full Name: gamma-glutamyltransferase 6	
Immunogen Catalog Number: AG35941	Observed MW: 44 kDa, 51 kDa	

Applications

Tested Applications: WB, IF/ICC, ELISA	Positive Controls:
Species Specificity: human	WB : A431 cells, HEK-293 cells, MCF-7 cells, MDA-MB-231 cells IF/ICC : A431 cells,

Background Information

Gamma-glutamyltransferase 6 (GGT6) is a membrane-bound extracellular enzyme encoded by the GGT6 gene on human chromosome 17p13.2. It belongs to the gamma-glutamyltransferase (GGT; EC 2.3.2.2) family, which catalyzes the cleavage of γ -glutamyl peptide bonds in glutathione and other peptides, transferring the γ -glutamyl moiety to various acceptors such as amino acids or water .

Storage

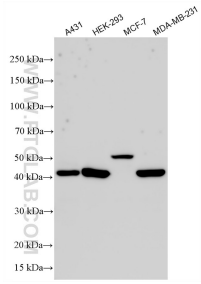
Storage:
Store at -20°C. Stable for one year after shipment.
Storage Buffer:
PBS with 0.02% sodium azide and 50% glycerol, pH7.3
Aliquoting is unnecessary for -20°C storage

*** 20ul sizes contain 0.1% BSA

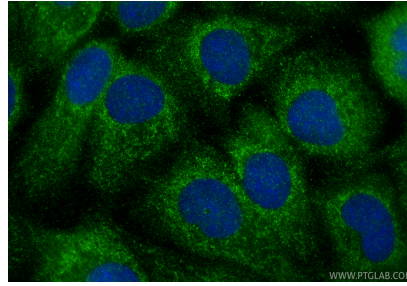
For technical support and original validation data for this product please contact:
T: 1 (888) 4PTGLAB (1-888-478-4522) (toll free in USA), or 1(312) 455-8498 (outside USA)
E: proteintech@ptglab.com
W: ptglab.com

This product is exclusively available under Proteintech Group brand and is not available to purchase from any other manufacturer.

Selected Validation Data



Various lysates were subjected to SDS PAGE followed by western blot with 33436-1-AP (GGT6 antibody) at dilution of 1:3000 incubated at room temperature for 1.5 hours.



Immunofluorescent analysis of (-20°C Methanol) fixed A431 cells using GGT6 antibody (33436-1-AP) at dilution of 1:400 and CoraLite® 488-Conjugated Goat Anti-Rabbit IgG(H+L) (SA00013-2).