

For Research Use Only

CIMIP2C Polyclonal antibody

Catalog Number: 33446-1-AP



Basic Information

Catalog Number: 33446-1-AP	GenBank Accession Number: NM_001105519	Purification Method: Antigen affinity Purification
Size: 150ul , Concentration: 300 ug/ml by Nanodrop;	GeneID (NCBI): 339778	Recommended Dilutions: WB: 1:500-1:1000
Source: Rabbit	UNIPROT ID: A6NJV1	
Isotype: IgG	Full Name: chromosome 2 open reading frame 70	
Immunogen Catalog Number: AG37807	Calculated MW: 201aa, 23 kDa	
	Observed MW: 23 kDa	

Applications

Tested Applications: WB, ELISA	Positive Controls: WB : human testis tissue, mouse spermatophore tissue
Species Specificity: human, mouse	

Background Information

CIMIP2C (ciliary microtubule inner protein 2C), also known as C2orf70, FAM166C, encodes a microtubule inner protein (MIP) that is an integral component of the dynein-decorated doublet microtubules (DMTs) within the axoneme of motile cilia. CIMIP2C shows biased expression in the testis, consistent with its role in flagellated sperm motility (PMID: 37989994).

Storage

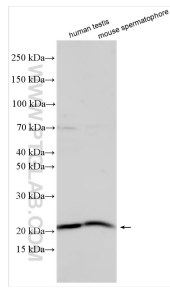
Storage:
Store at -20°C. Stable for one year after shipment.
Storage Buffer:
PBS with 0.02% sodium azide and 50% glycerol, pH7.3
Aliquoting is unnecessary for -20°C storage

*** 20ul sizes contain 0.1% BSA

For technical support and original validation data for this product please contact:
T: 1 (888) 4PTGLAB (1-888-478-4522) (toll free in USA), or 1(312) 455-8498 (outside USA) E: proteintech@ptglab.com
W: ptglab.com

This product is exclusively available under Proteintech Group brand and is not available to purchase from any other manufacturer.

Selected Validation Data



Various lysates were subjected to SDS PAGE followed by western blot with 33446-1-AP (CIMIP2C antibody) at dilution of 1:800 incubated at room temperature for 1.5 hours.