

For Research Use Only

CIMIP2C Polyclonal antibody, PBS Only

Catalog Number: 33446-1-PBS



Basic Information

Catalog Number: 33446-1-PBS	GenBank Accession Number: NM_001105519	Purification Method: Antigen affinity Purification
Size: 100ug , Concentration: 1 mg/ml by Nanodrop;	GeneID (NCBI): 339778	
Source: Rabbit	UNIPROT ID: A6NJV1	
Isotype: IgG	Full Name: chromosome 2 open reading frame 70	
Immunogen Catalog Number: AG37807	Calculated MW: 201aa, 23 kDa	
	Observed MW: 23 kDa	

Applications

Tested Applications:
WB, Indirect ELISA

Species Specificity:
human, mouse

Background Information

CIMIP2C (ciliary microtubule inner protein 2C), also known as C2orf70, FAM166C, encodes a microtubule inner protein (MIP) that is an integral component of the dynein-decorated doublet microtubules (DMTs) within the axoneme of motile cilia. CIMIP2C shows biased expression in the testis, consistent with its role in flagellated sperm motility (PMID: 37989994).

Storage

Storage:
Store at -80°C.
Storage Buffer:
PBS only, pH7.3

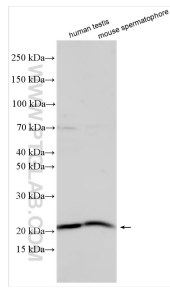
For technical support and original validation data for this product please contact:

T: 1 (888) 4PTGLAB (1-888-478-4522) (toll free in USA), or 1(312) 455-8498 (outside USA)

E: proteintech@ptglab.com
W: ptglab.com

This product is exclusively available under Proteintech Group brand and is not available to purchase from any other manufacturer.

Selected Validation Data



Various lysates were subjected to SDS PAGE followed by western blot with 33446-1-AP (CIMIP2C antibody) at dilution of 1:800 incubated at room temperature for 1.5 hours. This data was developed using the same antibody clone with 33446-1-PBS in a different storage buffer formulation.