

For Research Use Only

# RPP25L Polyclonal antibody

Catalog Number: 33447-1-AP



## Basic Information

<b>Catalog Number:</b> 33447-1-AP	<b>GenBank Accession Number:</b> BC032136	<b>Purification Method:</b> Antigen affinity Purification
<b>Size:</b> 150ul , Concentration: 400 ug/ml by Nanodrop;	<b>GeneID (NCBI):</b> 138716	<b>Recommended Dilutions:</b> WB: 1:1000-1:4000
<b>Source:</b> Rabbit	<b>UNIPROT ID:</b> Q8N5L8	
<b>Isotype:</b> IgG	<b>Full Name:</b> chromosome 9 open reading frame 23	
<b>Immunogen Catalog Number:</b> AG37795	<b>Observed MW:</b> 17-19 kDa	

## Applications

<b>Tested Applications:</b> WB, ELISA	<b>Positive Controls:</b> WB : A-204 cells, A431 cells, BxPC-3 cells, DU 145 cells, Raji cells, Ramos cells, THP-1 cells, U2OS cells
<b>Species Specificity:</b> human	

## Background Information

RPP25L (Ribonuclease P protein subunit p25-like protein), also known as C9orf23. RPP25L is a subunit of RNase P complex, which is mainly involved in the processing of tRNA precursor, and is responsible for cutting off the 5' leading sequence of tRNA precursor to generate mature tRNA. In addition, RPP25L may also participate in other RNA metabolism processes, such as the processing of rRNA.

## Storage

**Storage:**  
Store at -20°C. Stable for one year after shipment.  
**Storage Buffer:**  
PBS with 0.02% sodium azide and 50% glycerol, pH7.3  
Aliquoting is unnecessary for -20°C storage

\*\*\* 20ul sizes contain 0.1% BSA

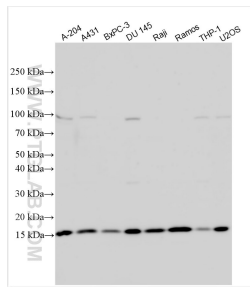
For technical support and original validation data for this product please contact:

T: 1 (888) 4PTGLAB (1-888-478-4522) (toll free in USA), or 1(312) 455-8498 (outside USA)

E: [proteintech@ptglab.com](mailto:proteintech@ptglab.com)  
W: [ptglab.com](http://ptglab.com)

This product is exclusively available under Proteintech Group brand and is not available to purchase from any other manufacturer.

## Selected Validation Data



Various lysates were subjected to SDS PAGE followed by western blot with 33447-1-AP (RPP25L antibody) at dilution of 1:2000 incubated at room temperature for 1.5 hours.